

Datasheet for ABIN7076858  
**anti-ITGAL antibody (PE)**



[Go to Product page](#)

1 Image

## Overview

Quantity:	100 tests
Target:	ITGAL
Reactivity:	Human
Host:	Mouse
Clonality:	Monoclonal
Conjugate:	This ITGAL antibody is conjugated to PE
Application:	Flow Cytometry (FACS)

## Product Details

Purpose:	CD11a PE Antibody
Immunogen:	Human HLA-DRCTL line cytolytic T-lymphocytes
Clone:	TS1-22
Isotype:	IgG1, kappa
Characteristics:	<p>The clone TS1/22 recognizes a 170-180 kDa alpha chain of a type I transmembrane glycoprotein also known as CD11a or LFA-1a. CD11a non-covalently associates with integrin <math>\beta 2</math> (CD18) to form LFA-1. CD11a is abundantly expressed on all leukocytes, including B and T lymphocytes, monocytes, macrophages, neutrophils, basophils and eosinophils but is not expressed by the non-hematopoietic tissues and platelets. Up-regulation of CD11a on activated lymphocytes is required to induce the immune response. Absence or reduced CD11a expression on tumor cells helps to escape from regular immune surveillance and may be a reason for in vivo tumor generation.</p>

### Product Details

Purification:	Purified
Purity:	>95 %
Grade:	GMP Grade

### Target Details

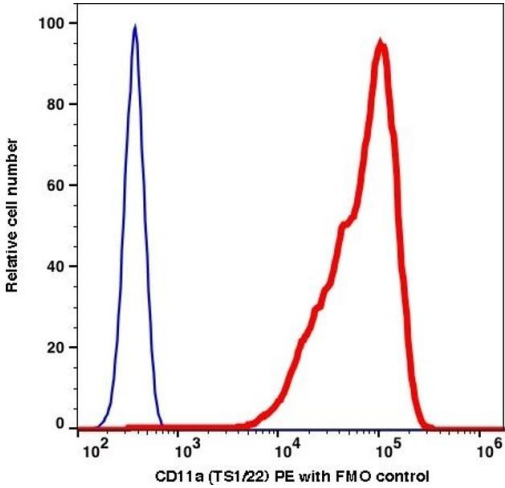
Target:	ITGAL
Alternative Name:	CD11a ( <a href="#">ITGAL Products</a> )
Gene ID:	3683
UniProt:	<a href="#">P20701</a>
Pathways:	<a href="#">Activated T Cell Proliferation, Integrin Complex</a>

### Application Details

Application Notes:	Optimal working dilution should be determined by the investigator.
Restrictions:	For Research Use only

### Handling

Format:	Liquid
Buffer:	PBS pH 7.2, 0.2 % (w/v) BSA, 0.09 % (w/v) sodium azide
Preservative:	Sodium azide
Precaution of Use:	This product contains Sodium azide: a POISONOUS AND HAZARDOUS SUBSTANCE which should be handled by trained staff only.
Storage:	4 °C
Storage Comment:	2-8°C, Conjugated antibodies should never be frozen.



Flow Cytometry

Image 1.