

Datasheet for ABIN7076867 **anti-CD11c antibody (PE)**



[Go to Product page](#)

1 Image

Overview

Quantity:	100 tests
Target:	CD11c (ITGAX)
Reactivity:	Human, Cynomolgus, Baboon, Rhesus Monkey
Host:	Mouse
Clonality:	Monoclonal
Conjugate:	This CD11c antibody is conjugated to PE
Application:	Flow Cytometry (FACS)

Product Details

Purpose:	CD11c PE Antibody
Immunogen:	Rheumatoid synovial fluid cells and fibronectin purified human monocytes
Clone:	3-9
Isotype:	IgG1, kappa
Characteristics:	<p>The clone 3.9 recognizes 150 kDa cell surface glycoprotein known as CD11c or Integrin αX. CD11c plays important role in the development of human dendritic cells (DCs) and is widely used to study the immune function of DCs along with staining of CD11b. Besides DCs, CD11c is also widely expressed by tissue macrophages, activated neutrophils/granulocytes, a subset of activated T cells and intestinal intraepithelial lymphocytes.</p>
Purification:	Purified
Purity:	>95 %

Product Details

Grade: GMP Grade

Target Details

Target: CD11c (ITGAX)

Alternative Name: CD11c ([ITGAX Products](#))

Gene ID: 3687

UniProt: [P20702](#)

Pathways: [Complement System](#), [Activated T Cell Proliferation](#), [Integrin Complex](#)

Application Details

Application Notes: Optimal working dilution should be determined by the investigator.

Restrictions: For Research Use only

Handling

Format: Liquid

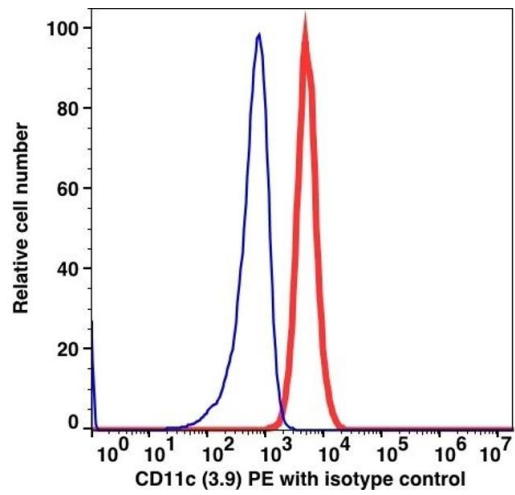
Buffer: PBS pH 7.2, 0.2 % (w/v) BSA, 0.09 % (w/v) sodium azide

Preservative: Sodium azide

Precaution of Use: This product contains Sodium azide: a POISONOUS AND HAZARDOUS SUBSTANCE which should be handled by trained staff only.

Storage: 4 °C

Storage Comment: 2-8°C, Conjugated antibodies should never be frozen.



Flow Cytometry

Image 1.