

Datasheet for ABIN7076894

anti-Syndecan 1 antibody (APC)



[Go to Product page](#)

1 Image

Overview

Quantity:	100 tests
Target:	Syndecan 1 (SDC1)
Reactivity:	Human
Host:	Mouse
Clonality:	Monoclonal
Conjugate:	This Syndecan 1 antibody is conjugated to APC
Application:	Flow Cytometry (FACS)

Product Details

Purpose:	CD138 APC Antibody
Immunogen:	266 cell line
Clone:	B-A38
Isotype:	IgG1, kappa
Characteristics:	The clone B-A38, a mouse monoclonal antibody, recognizes an 85-92 kDa single chain transmembrane proteoglycan known as CD138 or Syndecan-1. CD138 is commonly expressed on pre-B cells, immature B cells, plasma cells, and on some non-hematopoietic cells, including embryonic mesenchymal cells, vascular smooth muscle cells, endothelial and neural cells, on differentiating keratinocytes and in the epidermis of injured tissue. The presence of soluble CD138 (sCD138) in serum is considered as an important prognostic factor of cancerogenesis in some patients.
Purification:	Purified

Product Details

Purity: >95 %

Grade: GMP Grade

Target Details

Target: Syndecan 1 (SDC1)

Alternative Name: CD138 ([SDC1 Products](#))

Gene ID: 6382

UniProt: [P18827](#)

Pathways: [Glycosaminoglycan Metabolic Process](#), [Regulation of Muscle Cell Differentiation](#), [Skeletal Muscle Fiber Development](#), [Lipid Metabolism](#)

Application Details

Application Notes: Optimal working dilution should be determined by the investigator.

Restrictions: For Research Use only

Handling

Format: Liquid

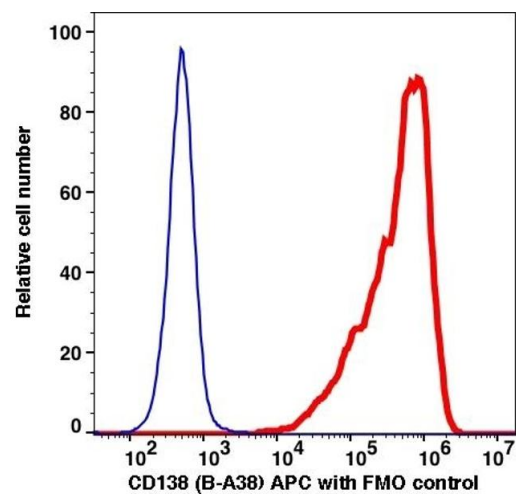
Buffer: PBS pH 7.2, 0.2 % (w/v) BSA, 0.09 % (w/v) sodium azide

Preservative: Sodium azide

Precaution of Use: This product contains Sodium azide: a POISONOUS AND HAZARDOUS SUBSTANCE which should be handled by trained staff only.

Storage: 4 °C

Storage Comment: 2-8°C, Conjugated antibodies should never be frozen.



Flow Cytometry

Image 1.