

Datasheet for ABIN7076955
anti-CD163 antibody (iFluor™647)



[Go to Product page](#)

1 Image

Overview

Quantity:	100 tests
Target:	CD163
Reactivity:	Human
Host:	Mouse
Clonality:	Monoclonal
Conjugate:	This CD163 antibody is conjugated to iFluor™647
Application:	Flow Cytometry (FACS)

Product Details

Purpose:	CD163 iFluor647 Antibody
Immunogen:	Human PBMC
Clone:	GHI-61
Isotype:	IgG1, kappa
Characteristics:	The clone GHI/61, a mouse monoclonal antibody, recognizes a hematopoietic cell surface glycoprotein antigen with a molecular weight of 180-220 kDa known as CD163.
Purification:	Purified
Purity:	>95 %
Grade:	GMP Grade

Target Details

Target:	CD163
Alternative Name:	CD163 (CD163 Products)
Gene ID:	9332
UniProt:	Q86VB7

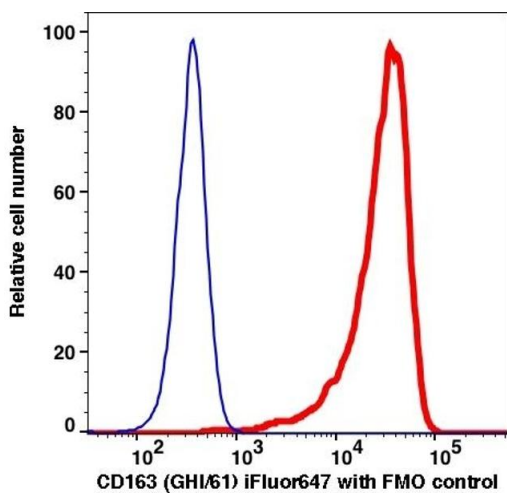
Application Details

Application Notes:	Optimal working dilution should be determined by the investigator.
Restrictions:	For Research Use only

Handling

Format:	Liquid
Buffer:	PBS pH 7.2, 0.2 % (w/v) BSA, 0.09 % (w/v) sodium azide
Preservative:	Sodium azide
Precaution of Use:	This product contains Sodium azide: a POISONOUS AND HAZARDOUS SUBSTANCE which should be handled by trained staff only.
Storage:	4 °C
Storage Comment:	2-8°C, Conjugated antibodies should never be frozen.

Images



Flow Cytometry

Image 1.