

Datasheet for ABIN7076964  
**anti-CXCR3 antibody (FITC)**[Go to Product page](#)

## 1 Image

## Overview

Quantity:	100 tests
Target:	CXCR3
Reactivity:	Human
Host:	Mouse
Clonality:	Monoclonal
Conjugate:	This CXCR3 antibody is conjugated to FITC
Application:	Flow Cytometry (FACS)

## Product Details

Immunogen:	Human CXCR3 peptide
Clone:	1C6
Isotype:	IgG1 kappa
Characteristics:	<p>The clone 1C6, a mouse monoclonal antibody specifically binds to a human 40-41 kDa transmembrane protein antigen known as CD183. It is also known as the CXCR3 chemokine receptor, a member of the G protein-coupled receptor family. CD183 is expressed primarily on activated T cells that infiltrate inflammatory sites as well as on some circulating T cells, B cells, and NK cells. Clone 1C6 has cross the reactivity with the PBMCs of baboon, rhesus and cynomolgus macaque monkeys.</p>
Purification:	Purified
Purity:	>95 %
Grade:	GMP Grade

## Target Details

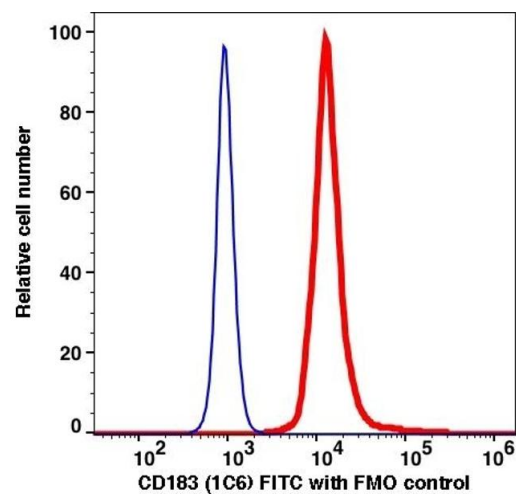
Target:	CXCR3
Alternative Name:	CD183 ( <a href="#">CXCR3 Products</a> )
Background:	The clone 1C6, a mouse monoclonal antibody specifically binds to a human 40-41 kDa transmembrane protein antigen known as CD183. It is also known as the CXCR3 chemokine receptor, a member of the G protein-coupled receptor family. CD183 is expressed primarily on activated T cells that infiltrate inflammatory sites as well as on some circulating T cells, B cells, and NK cells. Clone 1C6 has cross the reactivity with the PBMCs of baboon, rhesus and cynomolgus macaque monkeys.
Gene ID:	2833
UniProt:	<a href="#">P49682</a>

## Application Details

Restrictions:	For Research Use only
---------------	-----------------------

## Handling

Format:	Liquid
Buffer:	PBS pH 7.2, 0.2 % (w/v) BSA, 0.09 % (w/v) sodium azide
Preservative:	Sodium azide
Precaution of Use:	This product contains Sodium azide: a POISONOUS AND HAZARDOUS SUBSTANCE which should be handled by trained staff only.
Storage:	4 °C



Flow Cytometry

Image 1.