

Datasheet for ABIN7076970
anti-CD19 antibody (iFluor™ 647)



[Go to Product page](#)

1 Image

Overview

Quantity:	100 tests
Target:	CD19
Reactivity:	Human
Host:	Mouse
Clonality:	Monoclonal
Conjugate:	This CD19 antibody is conjugated to iFluor™647
Application:	Flow Cytometry (FACS)

Product Details

Purpose:	CD19 iFluor™ 647 Antibody
Immunogen:	Human CCL (chronic lymphocytic leukemia) cells
Clone:	4G7
Isotype:	IgG1, kappa
Characteristics:	The clone 4G7 recognizes a 90- kDa CD19 antigen that is present on human B lymphocytes. The CD19 antigen is present on approximately 7 to 23 % of human peripheral blood lymphocytes at all stages of B cell maturation but is lost on terminally differentiated plasma cells. CD19 does not react with resting or activated T lymphocytes, granulocytes, or monocytes.
Purification:	Purified
Purity:	>95 %
Grade:	GMP Grade

Target Details

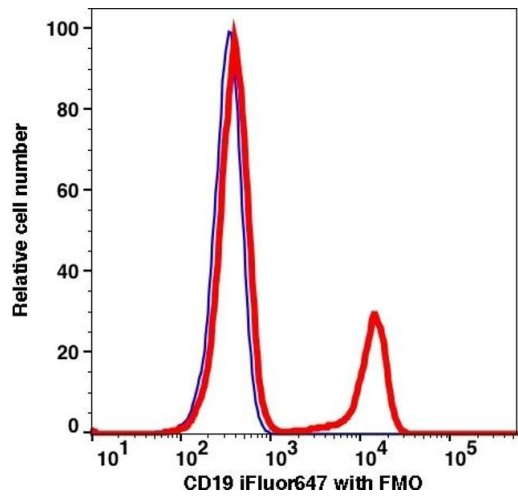
Target:	CD19
Alternative Name:	CD19 (CD19 Products)
Gene ID:	930
NCBI Accession:	NM_001770
UniProt:	P15391
Pathways:	Fc-epsilon Receptor Signaling Pathway , EGFR Signaling Pathway , Neurotrophin Signaling Pathway

Application Details

Application Notes:	Optimal working dilution should be determined by the investigator.
Restrictions:	For Research Use only

Handling

Format:	Liquid
Buffer:	PBS pH 7.2, 0.2 % (w/v) BSA, 0.09 % (w/v) sodium azide
Preservative:	Sodium azide
Precaution of Use:	This product contains Sodium azide: a POISONOUS AND HAZARDOUS SUBSTANCE which should be handled by trained staff only.
Storage:	4 °C
Storage Comment:	2-8°C, Conjugated antibodies should never be frozen.



Flow Cytometry

Image 1.