

Datasheet for ABIN7076997  
**anti-CCR2 antibody (iFluor™647)**



[Go to Product page](#)

1 Image

## Overview

Quantity:	100 tests
Target:	CCR2
Reactivity:	Human
Host:	Mouse
Clonality:	Monoclonal
Conjugate:	This CCR2 antibody is conjugated to iFluor™647
Application:	Flow Cytometry (FACS)

## Product Details

Purpose:	CD192 iFluor647 Antibody
Immunogen:	CCR2 transfected human cell line
Clone:	1D9
Isotype:	IgG2a, kappa
Characteristics:	The clone 1D9, a mouse monoclonal antibody selectively recognizes C-C chemokine receptor type 2 (CCR2), a cell surface protein known as CD192. It belongs to the beta chemokine receptor family having seven transmembrane (7-TM) G protein-linked receptors. CD192 interacts with its ligands CCL2, CCL8 and CCL16. It is expressed on basophils, monocytes/macrophages, dendritic cells, activated T cells and B cells. CD192 plays an important role in the monocytic infiltration of tissues associated with diseases including atherosclerosis, rheumatoid arthritis, and tumors.
Purification:	Purified

## Product Details

---

Purity: >95 %

Grade: GMP Grade

## Target Details

---

Target: CCR2

Alternative Name: CD192 ([CCR2 Products](#))

Gene ID: 729230

UniProt: [P41597](#)

Pathways: [cAMP Metabolic Process](#), [Regulation of Leukocyte Mediated Immunity](#), [Positive Regulation of Immune Effector Process](#)

## Application Details

---

Application Notes: Optimal working dilution should be determined by the investigator.

Restrictions: For Research Use only

## Handling

---

Format: Liquid

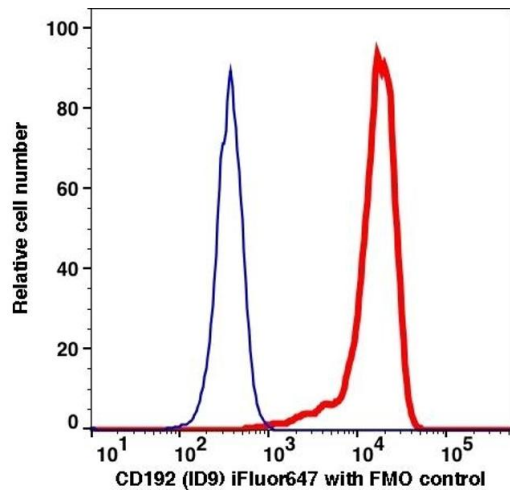
Buffer: PBS pH 7.2, 0.2 % (w/v) BSA, 0.09 % (w/v) sodium azide

Preservative: Sodium azide

Precaution of Use: This product contains Sodium azide: a POISONOUS AND HAZARDOUS SUBSTANCE which should be handled by trained staff only.

Storage: 4 °C

Storage Comment: 2-8°C, Conjugated antibodies should never be frozen.



## Flow Cytometry

Image 1.