

Datasheet for ABIN7077018 **anti-CD20 antibody (mFluor™450)**



[Go to Product page](#)

1 Image

Overview

| | |
|--------------|--|
| Quantity: | 100 tests |
| Target: | CD20 (MS4A1) |
| Reactivity: | Human, Rhesus Monkey, Baboon, Cynomolgus |
| Host: | Mouse |
| Clonality: | Monoclonal |
| Conjugate: | This CD20 antibody is conjugated to mFluor™450 |
| Application: | Flow Cytometry (FACS) |

Product Details

| | |
|------------------|---|
| Purpose: | CD20 mFluor450 Antibody |
| Immunogen: | Human tonsillar B cells |
| Clone: | 2H7 |
| Isotype: | IgG2b, kappa |
| Characteristics: | The clone 2H7 recognizes the large extracellular loop of human CD20, mapped to the peptide sequence YNCEPANPSEKNSPST. CD20, a 33-36 kDa non-glycosylated type 1 transmembrane protein, is expressed by developing, resting and mature B cells, some follicular dendritic cells, and a small subset of mature T cells. B cell CD20 expression is lost upon differentiation into plasma cells. Functionally, CD20 activation contributes to B cell activation, proliferation, and differentiation |
| Purification: | Purified |
| Purity: | >95 % |

Product Details

Grade: GMP Grade

Target Details

Target: CD20 (MS4A1)

Alternative Name: CD20 ([MS4A1 Products](#))

Gene ID: 931

NCBI Accession: [NM_152866](#)

UniProt: [P11836](#)

Application Details

Application Notes: Optimal working dilution should be determined by the investigator.

Restrictions: For Research Use only

Handling

Format: Liquid

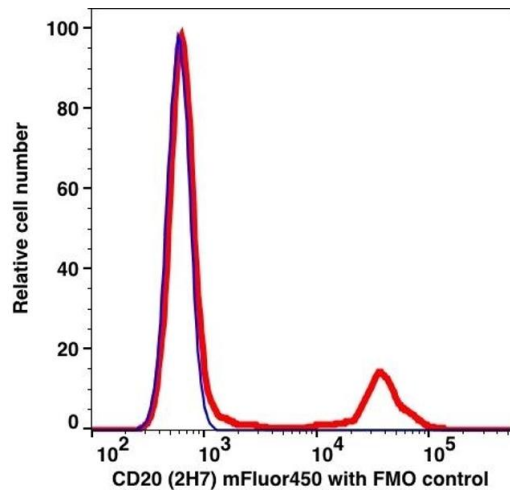
Buffer: PBS pH 7.2, 0.2 % (w/v) BSA, 0.09 % (w/v) sodium azide

Preservative: Sodium azide

Precaution of Use: This product contains Sodium azide: a POISONOUS AND HAZARDOUS SUBSTANCE which should be handled by trained staff only.

Storage: 4 °C

Storage Comment: 2-8°C, Conjugated antibodies should never be frozen.



Flow Cytometry

Image 1.