

Datasheet for ABIN7077030
anti-CD20 antibody (iFluor™ 488)



[Go to Product page](#)

1 Image

Overview

Quantity:	100 tests
Target:	CD20 (MS4A1)
Reactivity:	Human, Rhesus Monkey, Rat
Host:	Mouse
Clonality:	Monoclonal
Conjugate:	This CD20 antibody is conjugated to iFluor™ 488
Application:	Flow Cytometry (FACS)

Product Details

Purpose:	CD20 iFluor488 Antibody
Immunogen:	CD20 protein
Clone:	B9E9
Isotype:	IgG2a
Characteristics:	The clone B9E9, a mouse monoclonal antibody selectively recognizes non-glycosylated 33-37 kDa surface type 1 transmembrane protein antigen known as CD20. CD20 is expressed by developing, resting and mature B cells, some follicular dendritic cells, and a small subset of mature T cells. CD20 surface expression on B cells is lost upon differentiation into plasma cells. Functionally, CD20 promotes activation, proliferation and differentiation of B cells.
Purification:	Purified
Purity:	>95 %

Product Details

Grade: GMP Grade

Target Details

Target: CD20 (MS4A1)

Alternative Name: CD20 ([MS4A1 Products](#))

Gene ID: 931

NCBI Accession: [NM_152866](#)

UniProt: [P11836](#)

Application Details

Application Notes: Optimal working dilution should be determined by the investigator.

Restrictions: For Research Use only

Handling

Format: Liquid

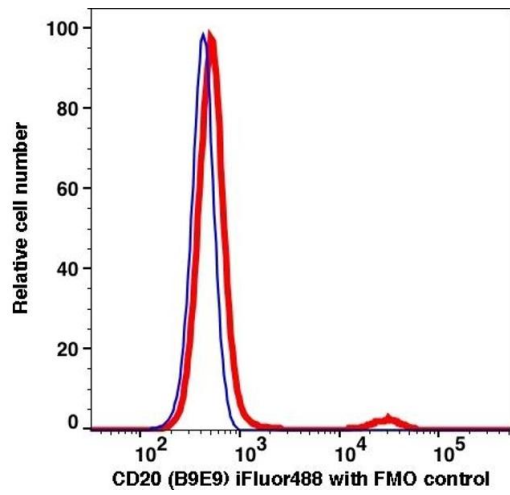
Buffer: PBS pH 7.2, 0.2 % (w/v) BSA, 0.09 % (w/v) sodium azide

Preservative: Sodium azide

Precaution of Use: This product contains Sodium azide: a POISONOUS AND HAZARDOUS SUBSTANCE which should be handled by trained staff only.

Storage: 4 °C

Storage Comment: 2-8°C, Conjugated antibodies should never be frozen.



Flow Cytometry

Image 1.