

Datasheet for ABIN7077033 **anti-CD21 antibody (FITC)**



[Go to Product page](#)

1 Image

Overview

Quantity:	100 tests
Target:	CD21 (CR2)
Reactivity:	Human
Host:	Mouse
Clonality:	Monoclonal
Conjugate:	This CD21 antibody is conjugated to FITC
Application:	Flow Cytometry (FACS)

Product Details

Purpose:	CD21 FITC Antibody
Immunogen:	Human complement receptor 2 (CR2)
Clone:	HB5
Isotype:	IgG2a
Characteristics:	<p>The mouse monoclonal antibody produced by clone HB5 binds to complement receptor 2 (CR2), known as CD21, a 145 kDa glycoprotein of the complement control protein family. It is a receptor for the complement components C3d and C3g and, under pathological circumstances, for the Epstein-Barr virus (EBV). As complement breakdown fragments remain bound to the agent initiating the complement activation in the first place, CD21 plays an important role in the uptake of immunocomplexes. In addition, it plays a role in B cell development and activation as well as memory B cell survival. Thus, it is a key component in developing and maintaining humoral immune response to T-dependent antigens. CD21 associates with CD19, CD81 and</p>

Product Details

the B cell receptor. The cell surface marker CD21 is expressed on mature B cells and follicular dendritic cells. It is used as a cell marker for the phenotyping of leukemias.

Purification: Purified

Purity: >95 %

Grade: GMP Grade

Target Details

Target: CD21 (CR2)

Alternative Name: CD21 ([CR2 Products](#))

Gene ID: 1380

UniProt: [P20023](#)

Pathways: [Complement System](#)

Application Details

Application Notes: Optimal working dilution should be determined by the investigator.

Restrictions: For Research Use only

Handling

Format: Liquid

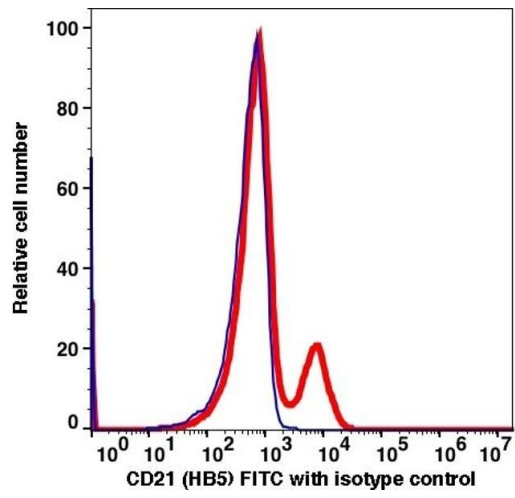
Buffer: PBS pH 7.2, 0.2 % (w/v) BSA, 0.09 % (w/v) sodium azide

Preservative: Sodium azide

Precaution of Use: This product contains Sodium azide: a POISONOUS AND HAZARDOUS SUBSTANCE which should be handled by trained staff only.

Storage: 4 °C

Storage Comment: 2-8°C, Conjugated antibodies should never be frozen.



Flow Cytometry

Image 1.