



## Datasheet for ABIN7077042 **anti-CD226 antibody (FITC)**



[Go to Product page](#)

### 1 Image

#### Overview

Quantity:	100 tests
Target:	CD226
Reactivity:	Human
Host:	Mouse
Clonality:	Monoclonal
Conjugate:	This CD226 antibody is conjugated to FITC
Application:	Flow Cytometry (FACS)

#### Product Details

Immunogen:	Human NK Cells
Clone:	11A8
Isotype:	IgG1 kappa
Characteristics:	The clone 11A8, a mouse monoclonal antibody, recognizes a ~65 kDa cell surface glycoprotein known as CD226. It is a member of immunoglobulin superfamily containing two immunoglobulin-like variable domains. CD226 is widely expressed on peripheral blood T cells, NK cells, monocytes/macrophages, platelets and megakaryocytes and on a subset of B cells. It plays important role in the process of cytotoxic activities mediated by NK and T cells.
Purification:	Purified
Purity:	>95 %
Grade:	GMP Grade

## Target Details

---

Target:	CD226
Alternative Name:	CD226 ( <a href="#">CD226 Products</a> )
Background:	The clone 11A8, a mouse monoclonal antibody, recognizes a ~65 kDa cell surface glycoprotein known as CD226. It is a member of immunoglobulin superfamily containing two immunoglobulin-like variable domains. CD226 is widely expressed on peripheral blood T cells, NK cells, monocytes/macrophages, platelets and megakaryocytes and on a subset of B cells. It plays important role in the process of cytotoxic activities mediated by NK and T cells.
Gene ID:	10666
UniProt:	<a href="#">Q15762</a>
Pathways:	<a href="#">Regulation of Leukocyte Mediated Immunity</a> , <a href="#">Positive Regulation of Immune Effector Process</a> , <a href="#">Cancer Immune Checkpoints</a>

## Application Details

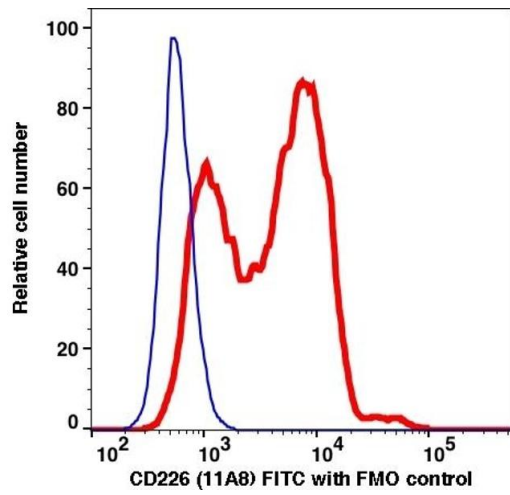
---

Restrictions:	For Research Use only
---------------	-----------------------

## Handling

---

Format:	Liquid
Buffer:	PBS pH 7.2, 0.2 % (w/v) BSA, 0.09 % (w/v) sodium azide
Preservative:	Sodium azide
Precaution of Use:	This product contains Sodium azide: a POISONOUS AND HAZARDOUS SUBSTANCE which should be handled by trained staff only.
Storage:	4 °C



### Flow Cytometry

Image 1.