

## Datasheet for ABIN7077091 **anti-ITGB1 antibody (FITC)**



[Go to Product page](#)

### 1 Image

#### Overview

Quantity:	100 tests
Target:	ITGB1
Reactivity:	Human
Host:	Mouse
Clonality:	Monoclonal
Conjugate:	This ITGB1 antibody is conjugated to FITC
Application:	Flow Cytometry (FACS)

#### Product Details

Purpose:	CD29 FITC Antibody
Immunogen:	Human cytolytic T lymphocytes
Clone:	TS2-16-2-1
Isotype:	IgG1, kappa
Characteristics:	<p>The clone TS2/16.2.1, a mouse monoclonal antibody selectively binds to a 130 kDa single chain type I surface glycoprotein known as CD29. It is also known as integrin <math>\beta</math>1 which is expressed as a heterodimeric complex with one of six distinct <math>\alpha</math> subunits, comprising the very late activation antigen (VLA) subfamily of adhesion receptors. CD29 is broadly expressed on a majority of hematopoietic and non-hematopoietic cells, including leukocytes, platelets, fibroblasts, endothelial cells, epithelial cells, and mast cells. It acts as a fibronectin receptor and is involved in a variety of cell-cell and cell-matrix interactions.</p>
Purification:	Purified

## Product Details

---

Purity: >95 %

Grade: GMP Grade

## Target Details

---

Target: ITGB1

Alternative Name: CD29 ([ITGB1 Products](#))

Gene ID: 3688

Pathways: [Cell-Cell Junction Organization](#), [Regulation of G-Protein Coupled Receptor Protein Signaling](#), [CXCR4-mediated Signaling Events](#), [Signaling of Hepatocyte Growth Factor Receptor](#), [Integrin Complex](#), [SARS-CoV-2 Protein Interactome](#)

## Application Details

---

Application Notes: Optimal working dilution should be determined by the investigator.

Restrictions: For Research Use only

## Handling

---

Format: Liquid

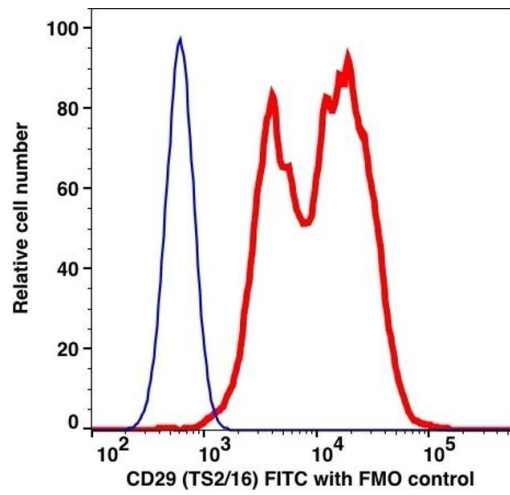
Buffer: PBS pH 7.2, 0.2 % (w/v) BSA, 0.09 % (w/v) sodium azide

Preservative: Sodium azide

Precaution of Use: This product contains Sodium azide: a POISONOUS AND HAZARDOUS SUBSTANCE which should be handled by trained staff only.

Storage: 4 °C

Storage Comment: 2-8°C, Conjugated antibodies should never be frozen.



## Flow Cytometry

Image 1.