

Datasheet for ABIN7077124 **anti-CD3 antibody (FITC)**



[Go to Product page](#)

1 Image

Overview

Quantity:	100 tests
Target:	CD3
Reactivity:	Human, Chimpanzee
Host:	Mouse
Clonality:	Monoclonal
Conjugate:	This CD3 antibody is conjugated to FITC
Application:	Flow Cytometry (FACS)

Product Details

Purpose:	CD3 FITC Antibody
Immunogen:	Human Thymocytes
Clone:	SK7
Isotype:	IgG1, kappa
Characteristics:	<p>The monoclonal SK7 clone recognizes antigen CD3ϵ epsilon, a 20KDa transmembrane cell-surface protein that belongs to the immunoglobulin superfamily. The CD3 complex contains a CD3γ chain, a CD3δ chain, and two CD3ϵ chains. These integral membrane protein chains assemble with additional chains of the T cell receptor (TCR), as well as CD3 zeta chain, to form the T cell receptor - CD3 complex. Together with co-receptors CD4 or CD8, the complex serves to recognize antigens bound to MHC molecules on antigen-presenting cells. CD3ϵ is expressed on T lymphocytes, NK-T cells, and to a varying degree in developing thymocytes. CD3 plays central roles in TCR signaling, T lymphocyte activation, and antigen recognition.</p>

Product Details

Purification: Purified

Purity: >95 %

Grade: GMP Grade

Target Details

Target: CD3

Alternative Name: CD3 ([CD3 Products](#))

Gene ID: 916

NCBI Accession: [NM_000733](#)

UniProt: [P07766](#)

Pathways: [TCR Signaling, Ubiquitin Proteasome Pathway](#)

Application Details

Application Notes: Optimal working dilution should be determined by the investigator.

Restrictions: For Research Use only

Handling

Format: Liquid

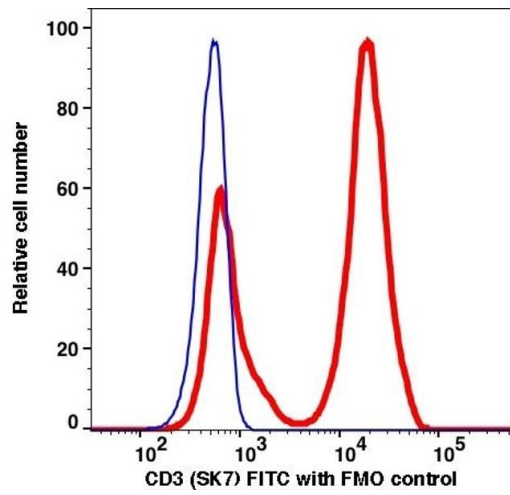
Buffer: PBS pH 7.2, 0.2 % (w/v) BSA, 0.09 % (w/v) sodium azide

Preservative: Sodium azide

Precaution of Use: This product contains Sodium azide: a POISONOUS AND HAZARDOUS SUBSTANCE which should be handled by trained staff only.

Storage: 4 °C

Storage Comment: 2-8°C, Conjugated antibodies should never be frozen.



Flow Cytometry

Image 1.