

Datasheet for ABIN7077187  
**anti-CD39 antibody (FITC)**[Go to Product page](#)

## 1 Image

## Overview

Quantity:	100 tests
Target:	CD39 (ENTPD1)
Reactivity:	Human
Host:	Mouse
Clonality:	Monoclonal
Conjugate:	This CD39 antibody is conjugated to FITC
Application:	Flow Cytometry (FACS)

## Product Details

Immunogen:	EBV-transformed B cells from a patient with MHC class-II deficiency re-expressing class-II antigens
Clone:	CAT-13-0B10
Isotype:	IgG1 kappa
Characteristics:	The clone CAT-13.0B10, a mouse monoclonal antibody recognizes a 70 - 100 kDa cell surface antigen known as CD39. It is also known as ATPDase or Ecto-ATP diphosphohydrolase as it has intrinsic Ecto-ATPase activity. CD39 is expressed on peripheral blood B cells and on a subset of T cells, and its expression level increases upon immune activation. The CD4+ CD39+ T cells catalyze cleavage of adenosine triphosphate (ATP) to adenosine monophosphate (AMP), largely overlap with the CD4+ CD25high FOXP3+ regulatory T cells and mediate potent immune suppression. CD39 also plays an important role in immune activation.
Purification:	Purified

## Product Details

Purity: >95 %

Grade: GMP Grade

## Target Details

Target: CD39 (ENTPD1)

Alternative Name: CD39 ([ENTPD1 Products](#))

Background: The clone CAT-13.0B10, a mouse monoclonal antibody recognizes a 70 - 100 kDa cell surface antigen known as CD39. It is also known as ATPDase or Ecto-ATP diphosphohydrolase as it has intrinsic Ecto-ATPase activity. CD39 is expressed on peripheral blood B cells and on a subset of T cells, and its expression level increases upon immune activation. The CD4+ CD39+ T cells catalyze cleavage of adenosine triphosphate (ATP) to adenosine monophosphate (AMP), largely overlap with the CD4+ CD25<sup>high</sup> FOXP3+ regulatory T cells and mediate potent immune suppression. CD39 also plays an important role in immune activation.

Gene ID: 953

UniProt: [P49961](#)

## Application Details

Restrictions: For Research Use only

## Handling

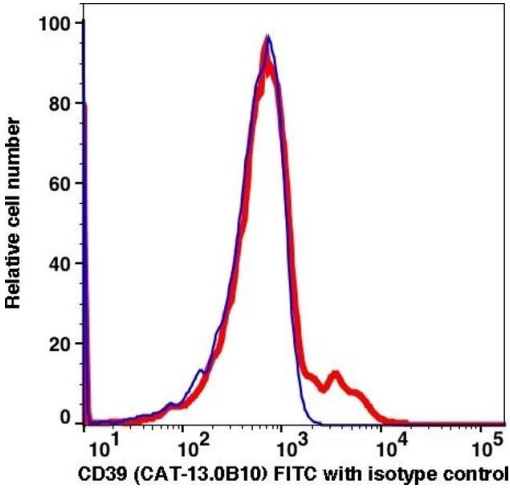
Format: Liquid

Buffer: PBS pH 7.2, 0.2 % (w/v) BSA, 0.09 % (w/v) sodium azide

Preservative: Sodium azide

Precaution of Use: This product contains Sodium azide: a POISONOUS AND HAZARDOUS SUBSTANCE which should be handled by trained staff only.

Storage: 4 °C



Flow Cytometry

Image 1.