

Datasheet for ABIN7077278
anti-CD5 antibody (FITC)



[Go to Product page](#)

1 Image

Overview

Quantity:	100 tests
Target:	CD5
Reactivity:	Human
Host:	Mouse
Clonality:	Monoclonal
Conjugate:	This CD5 antibody is conjugated to FITC
Application:	Flow Cytometry (FACS)

Product Details

Purpose:	CD5 FITC Antibody
Immunogen:	Human T Cells
Clone:	UCHT2
Isotype:	IgG1, kappa
Characteristics:	The clone UCHT2, a mouse monoclonal antibody selectively binds to a 67 kDa human single-chain type I cell surface glycoprotein known as CD5. It is a member of the scavenger receptor cysteine-rich protein superfamily (SRCR). It is expressed on T lymphocytes, thymocytes, and IgM-secreting B cells (B-1 cells). Chronic lymphocytic leukemia (CLL) is characterized by the accumulation of clonally derived mature CD5+CD19+CD23+CD20+ B cells in the blood, bone marrow, and secondary lymphoid organs.
Purification:	Purified
Purity:	>95 %

Product Details

Grade: GMP Grade

Target Details

Target: CD5

Alternative Name: CD5 ([CD5 Products](#))

Gene ID: 921

NCBI Accession: [NM_014207](#)

UniProt: [P06127](#)

Application Details

Application Notes: Optimal working dilution should be determined by the investigator.

Restrictions: For Research Use only

Handling

Format: Liquid

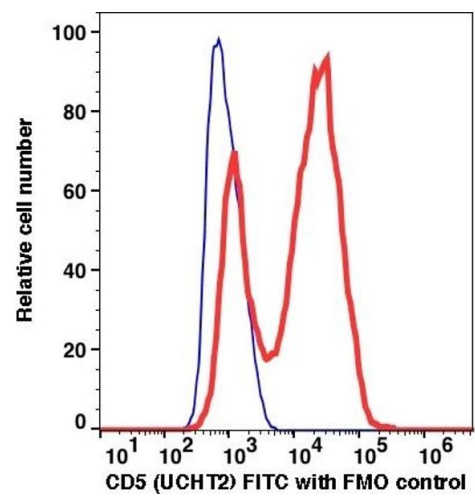
Buffer: PBS pH 7.2, 0.2 % (w/v) BSA, 0.09 % (w/v) sodium azide

Preservative: Sodium azide

Precaution of Use: This product contains Sodium azide: a POISONOUS AND HAZARDOUS SUBSTANCE which should be handled by trained staff only.

Storage: 4 °C

Storage Comment: 2-8°C, Conjugated antibodies should never be frozen.



Flow Cytometry

Image 1.