

## Datasheet for ABIN7077308 **anti-CD56 antibody (FITC)**



[Go to Product page](#)

### 1 Image

#### Overview

Quantity:	100 tests
Target:	CD56 (NCAM1)
Reactivity:	Human
Host:	Mouse
Clonality:	Monoclonal
Conjugate:	This CD56 antibody is conjugated to FITC
Application:	Flow Cytometry (FACS)

#### Product Details

Purpose:	CD56 FITC Antibody
Immunogen:	KG1a cell line
Clone:	MY31
Isotype:	IgG1
Characteristics:	<p>Clone MY31, a mouse antibody, binds to the human 140- kDa glycoprotein, an isoform of neural cell adhesion molecule (NCAM) known as CD56. CD56 and CD16 expressing lymphocytes are primarily considered as human NK cells and NK-T cells. A subset of CD56+ NK cells play a unique functional role in the innate immune response as the primary source of NK cell-derived immunoregulatory cytokines, regulated in part by differential monokine production. CD56 is also expressed in normal and neoplastic human neuroendocrine tissues, certain large granular lymphocyte (LGL) leukemias, small-cell lung carcinomas, neuronal derived tumors, myelomas, and myeloid leukemias. Increased CD56 + lymphocyte subsets in peripheral blood has a</p>

## Product Details

---

significant predictive or prognostic factor in metastatic breast cancer.

Purification: Purified

Purity: >95 %

Grade: GMP Grade

## Target Details

---

Target: CD56 (NCAM1)

Alternative Name: CD56 ([NCAM1 Products](#))

Gene ID: 4684

UniProt: [P13591](#)

## Application Details

---

Application Notes: Optimal working dilution should be determined by the investigator.

Restrictions: For Research Use only

## Handling

---

Format: Liquid

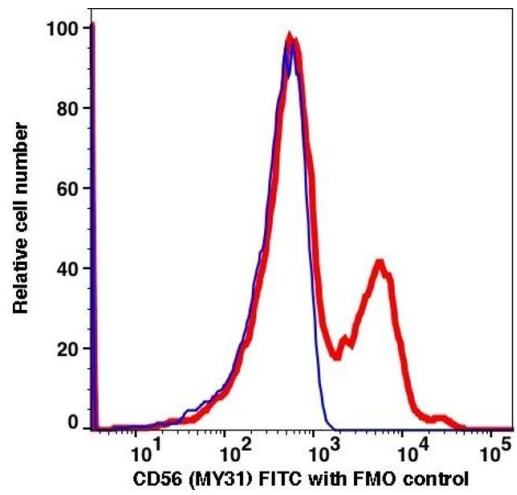
Buffer: PBS pH 7.2, 0.2 % (w/v) BSA, 0.09 % (w/v) sodium azide

Preservative: Sodium azide

Precaution of Use: This product contains Sodium azide: a POISONOUS AND HAZARDOUS SUBSTANCE which should be handled by trained staff only.

Storage: 4 °C

Storage Comment: 2-8°C, Conjugated antibodies should never be frozen.



### Flow Cytometry

Image 1.