

## Datasheet for ABIN7077379 **anti-CD68 antibody (FITC)**



[Go to Product page](#)

### 1 Image

#### Overview

Quantity:	100 tests
Target:	CD68
Reactivity:	Human
Host:	Mouse
Clonality:	Monoclonal
Conjugate:	This CD68 antibody is conjugated to FITC
Application:	Flow Cytometry (FACS)

#### Product Details

Purpose:	CD68 FITC Antibody
Immunogen:	Lysosomal fraction of human alveolar macrophages
Clone:	KP1
Isotype:	IgG1, kappa
Characteristics:	<p>The clone KP1 recognizes 110 kDa highly glycosylated lysosomal-associated membrane protein (LAMP) known as CD68. It plays important role in the immune process of endocytosis and/or lysosomal trafficking mostly carried out by cellular components of innate immunity. The CD68 is abundantly expressed in the cytoplasmic granules of macrophages, monocytes, neutrophils, basophils, subset of hematopoietic progenitors, <math>\gamma/\delta</math> T cells, NK cells, LAK cells, subset of B cells, fibroblasts, and endothelial cells. Studies suggest that KP1 is a very useful tool for studying disorders of the monocyte/macrophage system, including both reactive and neoplastic states.</p>

## Product Details

---

Purification: Purified

Purity: >95 %

Grade: GMP Grade

## Target Details

---

Target: CD68

Alternative Name: CD68 ([CD68 Products](#))

Gene ID: 968

UniProt: [P34810](#)

## Application Details

---

Application Notes: Optimal working dilution should be determined by the investigator.

Restrictions: For Research Use only

## Handling

---

Format: Liquid

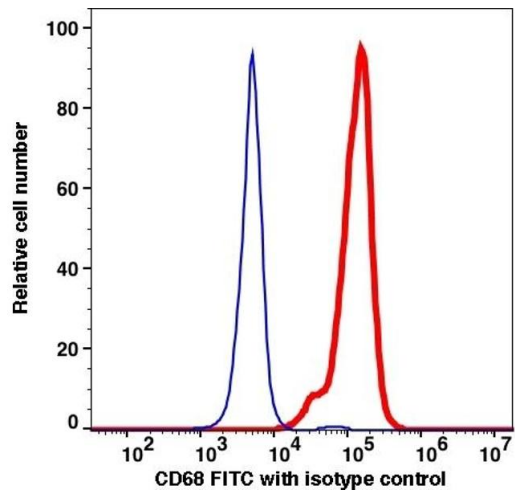
Buffer: PBS pH 7.2, 0.2 % (w/v) BSA, 0.09 % (w/v) sodium azide

Preservative: Sodium azide

Precaution of Use: This product contains Sodium azide: a POISONOUS AND HAZARDOUS SUBSTANCE which should be handled by trained staff only.

Storage: 4 °C

Storage Comment: 2-8°C, Conjugated antibodies should never be frozen.



### Flow Cytometry

Image 1.