

Datasheet for ABIN7077511 **anti-EpCAM antibody (FITC)**



[Go to Product page](#)

1 Image

Overview

Quantity:	100 tests
Target:	EpCAM (EPCAM)
Reactivity:	Human
Host:	Mouse
Clonality:	Monoclonal
Conjugate:	This EpCAM antibody is conjugated to FITC
Application:	Flow Cytometry (FACS)

Product Details

Purpose:	CD326 FITC Antibody
Immunogen:	Human colon carcinoma cell line HT-29
Clone:	HEA-125
Isotype:	IgG1, kappa
Characteristics:	The clone HEA-125 recognizes epithelium-specific surface glycoprotein having ~34 kDa which is currently known as EpCAM (Epithelial Cell Adhesion Molecule) or CD326. This antigen is expressed on most normal epithelial cells and highly expressed gastrointestinal carcinomas. It functions as a homotypic calcium-independent cell adhesion molecule. The antigen is being used as a target for immunotherapy treatment of human carcinomas. Mutations in this gene result in congenital tufting enteropathy.
Purification:	Purified
Purity:	>95 %

Product Details

Grade: GMP Grade

Target Details

Target: EpCAM (EPCAM)

Alternative Name: CD326 ([EPCAM Products](#))

Gene ID: 4072

UniProt: [P16422](#)

Application Details

Application Notes: Optimal working dilution should be determined by the investigator.

Restrictions: For Research Use only

Handling

Format: Liquid

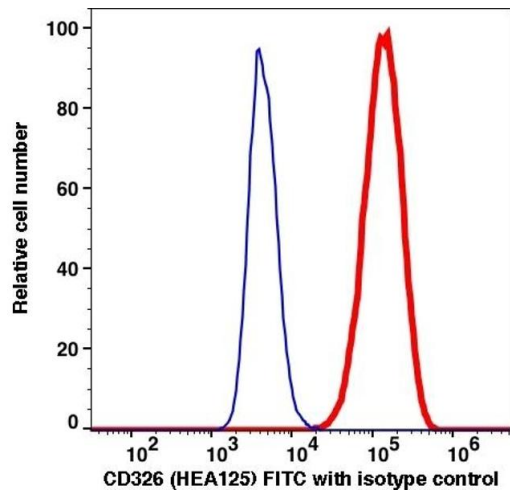
Buffer: PBS pH 7.2, 0.2 % (w/v) BSA, 0.09 % (w/v) sodium azide

Preservative: Sodium azide

Precaution of Use: This product contains Sodium azide: a POISONOUS AND HAZARDOUS SUBSTANCE which should be handled by trained staff only.

Storage: 4 °C

Storage Comment: 2-8°C, Conjugated antibodies should never be frozen.



Flow Cytometry

Image 1.