

Datasheet for ABIN7077534

anti-MHC Class II HLA-DP/DQ/DR antibody (FITC)[Go to Product page](#)**1** Image

Overview

Quantity:	100 tests
Target:	MHC Class II HLA-DP/DQ/DR (HLA-DP/DQ/DR)
Reactivity:	Human
Host:	Mouse
Clonality:	Monoclonal
Conjugate:	This MHC Class II HLA-DP/DQ/DR antibody is conjugated to FITC
Application:	Flow Cytometry (FACS)

Product Details

Purpose:	Anti-HLA-DR, DP, DQ FITC Antibody
Immunogen:	Priess human B cell line
Clone:	IVA12
Isotype:	IgG1, kappa
Characteristics:	<p>The clone IVA12 recognizes the shared epitopes of human leukocyte antigen (HLA) class II molecules HLA-DP, HLA-DQ and HLA-DR heterodimeric cell surface glycoproteins comprised of an α (heavy) chain and a β (light) chain. They are expressed on B cells, activated T cells, monocytes/macrophages, dendritic cells, and other non-professional antigen presenting cells (APCs). HLA-Class II expressing APCs specifically present antigens recognized by TCR/CD3 complex of CD4+ T cells. Reactive microglia and perivascular cells in multiple sclerosis lesions express all three types of HLA-Class II molecules, whereas microglia in the normal CNS express HLA-DR only.</p>

Product Details

Purification: Purified

Purity: >95 %

Grade: GMP Grade

Target Details

Target: MHC Class II HLA-DP/DQ/DR (HLA-DP/DQ/DR)

Alternative Name: HLA-DR, DP, DQ ([HLA-DP/DQ/DR Products](#))

Pathways: [Human Leukocyte Antigen \(HLA\) in Adaptive Immune Response](#)

Application Details

Application Notes: Optimal working dilution should be determined by the investigator.

Restrictions: For Research Use only

Handling

Format: Liquid

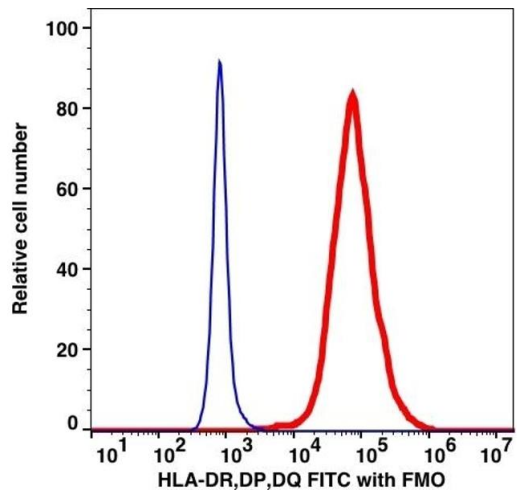
Buffer: PBS pH 7.2, 0.2 % (w/v) BSA, 0.09 % (w/v) sodium azide

Preservative: Sodium azide

Precaution of Use: This product contains Sodium azide: a POISONOUS AND HAZARDOUS SUBSTANCE which should be handled by trained staff only.

Storage: 4 °C

Storage Comment: 2-8°C, Conjugated antibodies should never be frozen.



Flow Cytometry

Image 1.