



[Go to Product page](#)

Datasheet for ABIN7077560

## Mouse anti-Human IgM Antibody (mFluor™450)

### 1 Image

#### Overview

Quantity:	100 tests
Target:	IgM
Reactivity:	Human
Host:	Mouse
Clonality:	Monoclonal
Conjugate:	mFluor™450

#### Product Details

Immunogen:	Purified human IgM
Clone:	M-2E6
Isotype:	IgG1 kappa
Characteristics:	<p>The clone M-2E6, a mouse monoclonal antibody selectively recognizes the epitope present in the Fab arms (anti-Fd<math>\mu</math>) of the surface monomeric IgM molecule on B cells. It reduces the growth of the neoplastic B cells through its intrinsic crosslinking property in vitro. IgM is the first immunoglobulin expressed in the human fetus at around 20 weeks. It plays various important immunological roles in protecting host from the viral and bacterial infections as well as from the autoimmune diseases.</p>
Purification:	Purified
Purity:	>95 %
Grade:	GMP Grade

## Target Details

---

Target:	IgM
Abstract:	<a href="#">IgM Products</a>
Target Type:	Antibody
Background:	<p>The clone M--2E6, a mouse monoclonal antibody selectively recognizes the epitope present in the Fab arms (anti-Fd<math>\mu</math>) of the surface monomeric IgM molecule on B cells. It reduces the growth of the neoplastic B cells through its intrinsic crosslinking property in vitro. IgM is the first immunoglobulin expressed in the human fetus at around 20 weeks. It plays various important immunological roles in protecting host from the viral and bacterial infections as well as from the autoimmune diseases.</p>
Gene ID:	959
UniProt:	<a href="#">P29965</a>

## Application Details

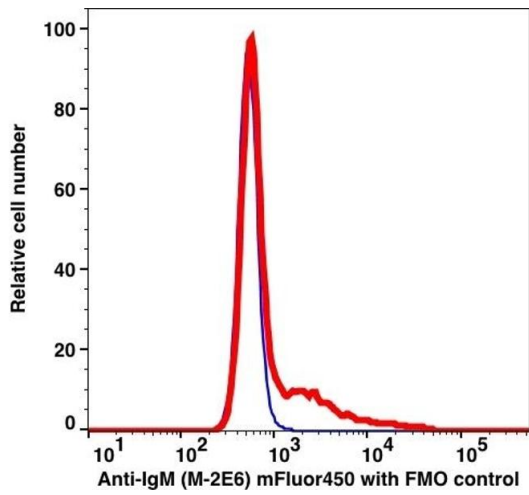
---

Restrictions: For Research Use only

## Handling

---

Format:	Liquid
Buffer:	PBS pH 7.2, 0.2 % (w/v) BSA, 0.09 % (w/v) sodium azide
Preservative:	Sodium azide
Precaution of Use:	This product contains Sodium azide: a POISONOUS AND HAZARDOUS SUBSTANCE which should be handled by trained staff only.
Storage:	4 °C



### Flow Cytometry

Image 1.