



[Go to Product page](#)

Datasheet for ABIN7077606  
**anti-IgD antibody (iFluor™700)**

1 Image

Overview

Quantity:	100 tests
Target:	IgD
Reactivity:	Human
Host:	Mouse
Clonality:	Monoclonal
Conjugate:	This IgD antibody is conjugated to iFluor™700
Application:	Please inquire

Product Details

Immunogen:	Human IgD
Clone:	IA6-2
Isotype:	IgG2a kappa
Characteristics:	The clone IA6-2, a mouse monoclonal antibody selectively recognizes the heavy chain of human Immunoglobulin D (IgD). It is a member of the immunoglobulin superfamily. membrane-bound on B cells and secreted soluble form of IgD in serum is an evolutionarily conserved Ig isotype containing a dand its expression on B cells precisely regulates B cell developmental and functional stages while serving as a B-cell receptor in association with other surface antigens such as CD27, IgM, etc.
Purification:	Purified
Purity:	>95 %
Grade:	GMP Grade

## Target Details

---

Target:	IgD
Abstract:	<a href="#">IgD Products</a>
Target Type:	Antibody
Background:	The clone IA6-2, a mouse monoclonal antibody selectively recognizes the heavy chain of human Immunoglobulin D (IgD). It is a member of the immunoglobulin superfamily. membrane-bound on B cells and secreted soluble form of IgD in serum is an evolutionarily conserved Ig isotype containing a dand its expression on B cells precisely regulates B cell developmental and functional stages while serving as a B-cell receptor in association with other surface antigens such as CD27, IgM, etc.
Gene ID:	4598
UniProt:	<a href="#">Q03426</a>

## Application Details

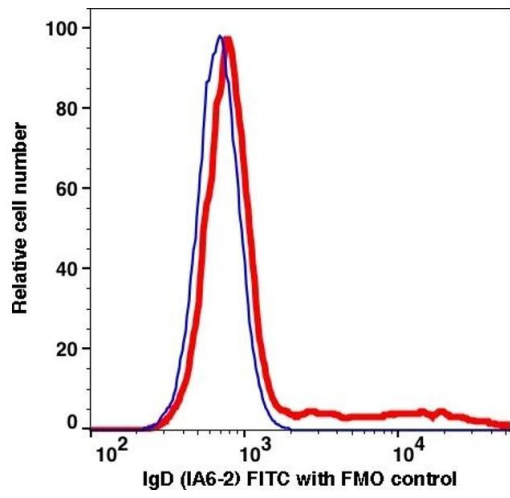
---

Restrictions: For Research Use only

## Handling

---

Format:	Liquid
Buffer:	PBS pH 7.2, 0.2 % (w/v) BSA, 0.09 % (w/v) sodium azide
Preservative:	Sodium azide
Precaution of Use:	This product contains Sodium azide: a POISONOUS AND HAZARDOUS SUBSTANCE which should be handled by trained staff only.
Storage:	4 °C



## Flow Cytometry

Image 1.