

Datasheet for ABIN7077625
anti-pan Keratin antibody (iFluor™488)



[Go to Product page](#)

1 Image

Overview

Quantity:	100 tests
Target:	pan Keratin (panKRT)
Reactivity:	Human
Host:	Mouse
Clonality:	Monoclonal
Conjugate:	This pan Keratin antibody is conjugated to iFluor™488
Application:	Please inquire

Product Details

Immunogen:	Keratin-enriched preparation from cultured human epithelial cells
Clone:	MCK457
Isotype:	IgG1 kappa
Characteristics:	The clone MCK-457 is a broad-spectrum antibody that recognizes the acidic (Type I or LMW) and basic (Type II or HMW) cytokeratins, the structural marker proteins specific for epithelial cells. MCK-457 has several binding sites including 59 kDa (CK4), 58 kDa (CK5), 56 kDa (CK6), 52 kDa (CK8), 56.5 kDa (CK10), 53 kDa (CK13) and 45 kDa (CK18). The differential cytokeratins expression by epithelial tumors from non-epithelial tumors is thus a useful tool in the study of cancer research, tumor diagnosis and metastasis.
Purification:	Purified
Purity:	>95 %
Grade:	GMP Grade

Target Details

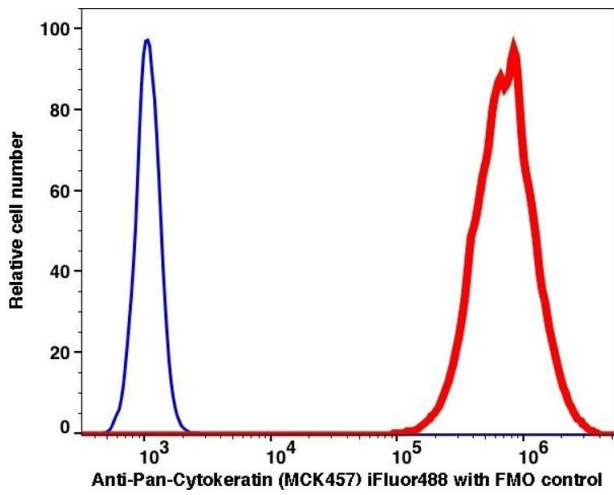
Target:	pan Keratin (panKRT)
Alternative Name:	Pan-Cytokeratin (panKRT Products)
Background:	The clone MCK-457 is a broad-spectrum antibody that recognizes the acidic (Type I or LMW) and basic (Type II or HMW) cytokeratins, the structural marker proteins specific for epithelial cells. MCK-457 has several binding sites including 59 kDa (CK4), 58 kDa (CK5), 56 kDa (CK6), 52 kDa (CK8), 56.5 kDa (CK10), 53 kDa (CK13) and 45 kDa (CK18). The differential cytokeratins expression by epithelial tumors from non-epithelial tumors is thus a useful tool in the study of cancer research, tumor diagnosis and metastasis.
Gene ID:	1373
UniProt:	P31327

Application Details

Restrictions:	For Research Use only
---------------	-----------------------

Handling

Format:	Liquid
Buffer:	PBS pH 7.2, 0.2 % (w/v) BSA, 0.09 % (w/v) sodium azide
Preservative:	Sodium azide
Precaution of Use:	This product contains Sodium azide: a POISONOUS AND HAZARDOUS SUBSTANCE which should be handled by trained staff only.
Storage:	4 °C



Flow Cytometry

Image 1.