

Datasheet for ABIN7077627
anti-pan Keratin antibody[Go to Product page](#)**1** Image

Overview

Quantity:	100 µg
Target:	pan Keratin (panKRT)
Reactivity:	Human
Host:	Mouse
Clonality:	Monoclonal
Conjugate:	This pan Keratin antibody is un-conjugated
Application:	Flow Cytometry (FACS)

Product Details

Purpose:	Anti-Pan-Cytokeratin Unconjugated Antibody
Immunogen:	Keratin-enriched preparation from cultured human epithelial cells
Clone:	MCK457
Isotype:	IgG1, kappa
Characteristics:	The clone MCK-457 is a broad-spectrum antibody that recognizes the acidic (Type I or LMW) and basic (Type II or HMW) cytokeratins, the structural marker proteins specific for epithelial cells. MCK-457 has several binding sites including 59 kDa (CK4), 58 kDa (CK5), 56 kDa (CK6), 52 kDa (CK8), 56.5 kDa (CK10), 53 kDa (CK13) and 45 kDa (CK18). The differential cytokeratins expression by epithelial tumors from non-epithelial tumors is thus a useful tool in the study of cancer research, tumor diagnosis and metastasis.
Purification:	Purified
Purity:	>95 %

Product Details

Grade: GMP Grade

Target Details

Target: pan Keratin (panKRT)

Alternative Name: Pan-Cytokeratin ([panKRT Products](#))

Gene ID: 1373

UniProt: [P31327](#)

Application Details

Application Notes: Optimal working dilution should be determined by the investigator.

Restrictions: For Research Use only

Handling

Format: Liquid

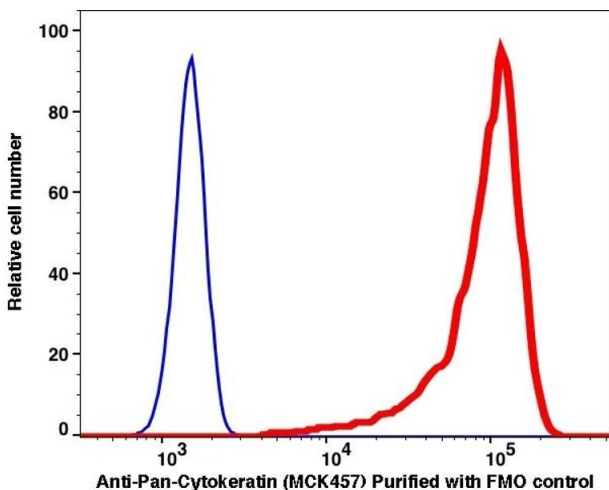
Buffer: PBS pH 7.2, 0.1 % (w/v) BSA, 0.09 % (w/v) sodium azide

Preservative: Sodium azide

Precaution of Use: This product contains Sodium azide: a POISONOUS AND HAZARDOUS SUBSTANCE which should be handled by trained staff only.

Storage: 4 °C

Images



Flow Cytometry

Image 1.