



[Go to Product page](#)

Datasheet for ABIN708206  
**anti-PEPCK antibody (AA 365-470)**

1 Image

Overview

Quantity:	100 µL
Target:	PEPCK
Binding Specificity:	AA 365-470
Reactivity:	Rat
Host:	Rabbit
Clonality:	Polyclonal
Conjugate:	This PEPCK antibody is un-conjugated
Application:	Western Blotting (WB), ELISA, Immunohistochemistry (Paraffin-embedded Sections) (IHC (p)), Immunofluorescence (Cultured Cells) (IF (cc)), Immunofluorescence (Paraffin-embedded Sections) (IF (p)), Immunohistochemistry (Frozen Sections) (IHC (fro))

Product Details

Immunogen:	KLH conjugated synthetic peptide derived from human PCK2
Isotype:	IgG
Cross-Reactivity:	Rat
Predicted Reactivity:	Human,Mouse,Cow,Pig,Horse,Rabbit
Purification:	Purified by Protein A.

Target Details

Target:	PEPCK
---------	-------

## Target Details

---

Alternative Name:	<a href="#">PCK2 (PEPCK Products)</a>
Background:	Synonyms: PEPCK, PEPCK2, PEPCK-M, Phosphoenolpyruvate carboxykinase [GTP], mitochondrial, PCK2 Background: Catalyzes the conversion of oxaloacetate (OAA) to phosphoenolpyruvate (PEP), the rate-limiting step in the metabolic pathway that produces glucose from lactate and other precursors derived from the citric acid cycle.
Gene ID:	5106
UniProt:	<a href="#">Q16822</a>
Pathways:	<a href="#">Positive Regulation of Peptide Hormone Secretion</a> , <a href="#">Carbohydrate Homeostasis</a>

## Application Details

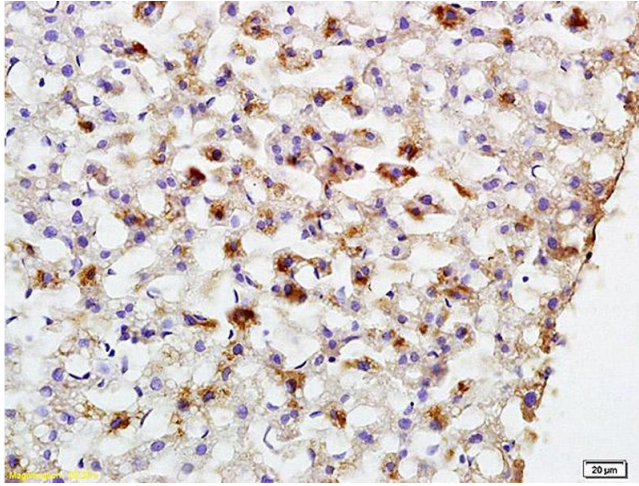
---

Application Notes:	WB 1:300-5000 ELISA 1:500-1000 IHC-P 1:200-400 IHC-F 1:100-500 IF(IHC-P) 1:50-200 IF(IHC-F) 1:50-200 IF(ICC) 1:50-200
Restrictions:	For Research Use only

## Handling

---

Format:	Liquid
Concentration:	1 µg/µL
Buffer:	0.01M TBS( pH 7.4) with 1 % BSA, 0.02 % Proclin300 and 50 % Glycerol.
Preservative:	ProClin
Precaution of Use:	This product contains ProClin: a POISONOUS AND HAZARDOUS SUBSTANCE, which should be handled by trained staff only.
Storage:	4 °C, -20 °C
Storage Comment:	Shipped at 4°C. Store at -20°C for one year. Avoid repeated freeze/thaw cycles.
Expiry Date:	12 months



### Immunohistochemistry

**Image 1.** Formalin-fixed and paraffin embedded rat liver labeled with Anti-PCK2 Polyclonal Antibody, Unconjugated (ABIN708206) at 1:200 followed by conjugation to the secondary antibody and DAB staining