

Datasheet for ABIN708761  
**anti-APOE antibody (AA 101-180)**[Go to Product page](#)

## 2 Images

## Overview

Quantity:	100 µL
Target:	APOE
Binding Specificity:	AA 101-180
Reactivity:	Human, Mouse, Rat
Host:	Rabbit
Clonality:	Polyclonal
Conjugate:	This APOE antibody is un-conjugated
Application:	Western Blotting (WB), ELISA, Immunohistochemistry (Paraffin-embedded Sections) (IHC (p)), Immunofluorescence (Paraffin-embedded Sections) (IF (p)), Immunofluorescence (Cultured Cells) (IF (cc)), Immunohistochemistry (Frozen Sections) (IHC (fro))

## Product Details

Immunogen:	KLH conjugated synthetic peptide derived from human APOE3
Isotype:	IgG
Specificity:	This antibody may detect APOE2, APOE3, and APOE4
Cross-Reactivity:	Human, Mouse, Rat
Predicted Reactivity:	Cow,Pig
Purification:	Purified by Protein A.

## Target Details

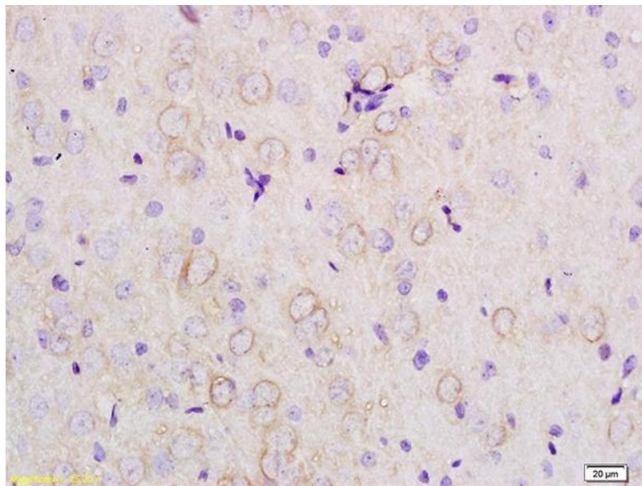
Target:	APOE
Alternative Name:	APOE ( <a href="#">APOE Products</a> )
Background:	Synonyms: AD2, LPG, APO-E, LDLCQ5, Apolipoprotein E, APOE Background: Mediates the binding, internalization, and catabolism of lipoprotein particles. It can serve as a ligand for the LDL (apo B/E) receptor and for the specific apo-E receptor (chylomicron remnant) of hepatic tissues.
Gene ID:	348
UniProt:	<a href="#">P02649</a>
Pathways:	<a href="#">Regulation of Cell Size</a> , <a href="#">Lipid Metabolism</a>

## Application Details

Application Notes:	WB 1:300-5000 ELISA 1:500-1000 IHC-P 1:200-400 IHC-F 1:100-500 IF(IHC-P) 1:50-200 IF(IHC-F) 1:50-200 IF(ICC) 1:50-200
Restrictions:	For Research Use only

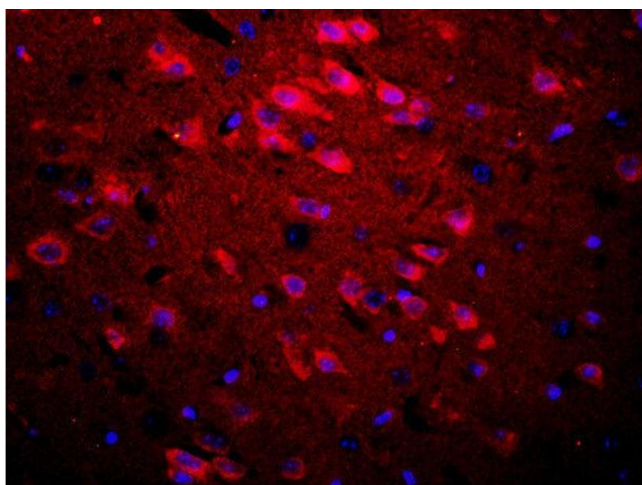
## Handling

Format:	Liquid
Concentration:	1 µg/µL
Buffer:	0.01M TBS( pH 7.4) with 1 % BSA, 0.02 % Proclin300 and 50 % Glycerol.
Preservative:	ProClin
Precaution of Use:	This product contains ProClin: a POISONOUS AND HAZARDOUS SUBSTANCE, which should be handled by trained staff only.
Storage:	4 °C, -20 °C
Storage Comment:	Shipped at 4°C. Store at -20°C for one year. Avoid repeated freeze/thaw cycles.
Expiry Date:	12 months



### Immunohistochemistry

**Image 1.** Formalin-fixed and paraffin embedded rat brain tissue labeled with Anti-APOE3 Polyclonal Antibody, Unconjugated (ABIN708761) at 1:200 followed by conjugation to the secondary antibody



### Immunofluorescence (Paraffin-embedded Sections)

**Image 2.** Formalin-fixed and paraffin embedded rat brain labeled with Rabbit Anti-APOE3 Polyclonal Antibody, Unconjugated used at 1:200 dilution for 40 minutes at 37°C.