

Datasheet for ABIN708851  
**anti-CPT1B antibody (AA 501-600)**

3 Images

1 Publication

[Go to Product page](#)

## Overview

Quantity:	100 µL
Target:	CPT1B
Binding Specificity:	AA 501-600
Reactivity:	Human, Mouse, Rat
Host:	Rabbit
Clonality:	Polyclonal
Conjugate:	This CPT1B antibody is un-conjugated
Application:	Western Blotting (WB), ELISA, Immunohistochemistry (Paraffin-embedded Sections) (IHC (p)), Immunofluorescence (Cultured Cells) (IF (cc)), Immunofluorescence (Paraffin-embedded Sections) (IF (p)), Immunohistochemistry (Frozen Sections) (IHC (fro))

## Product Details

Immunogen:	KLH conjugated synthetic peptide derived from human CPT1B
Isotype:	IgG
Specificity:	This antibody should detect the four Isoforms variants of CPT1B created by alternative splicing.
Cross-Reactivity:	Human, Mouse, Rat
Predicted Reactivity:	Dog,Cow,Sheep,Pig,Horse
Purification:	Purified by Protein A.

## Target Details

Target:	CPT1B
Alternative Name:	CPT1B ( <a href="#">CPT1B Products</a> )
Background:	<p>Synonyms: Carnitine O-palmitoyltransferase 1, muscle isoform, CPT1-M, Carnitine O-palmitoyltransferase I, muscle isoform, CPT I, CPTI-M, Carnitine palmitoyltransferase 1B, Carnitine palmitoyltransferase I-like protein, CPT1B, KIAA1670</p> <p>Background: The protein encoded by this gene, a member of the carnitine/choline acetyltransferase family, is the rate-controlling enzyme of the long-chain fatty acid beta-oxidation pathway in muscle mitochondria. This enzyme is required for the net transport of long-chain fatty acyl-CoAs from the cytoplasm into the mitochondria. Multiple transcript variants encoding different isoforms have been found for this gene, and read-through transcripts are expressed from the upstream locus that include exons from this gene. [provided by RefSeq, Jun 2009].</p>
Gene ID:	1375
UniProt:	<a href="#">Q92523</a>
Pathways:	<a href="#">AMPK Signaling</a> , <a href="#">Monocarboxylic Acid Catabolic Process</a>

## Application Details

Application Notes:	WB 1:300-5000 ELISA 1:500-1000 IHC-P 1:200-400 IHC-F 1:100-500 IF(IHC-P) 1:50-200 IF(IHC-F) 1:50-200 IF(ICC) 1:50-200
Restrictions:	For Research Use only

## Handling

Format:	Liquid
Concentration:	1 µg/µL
Buffer:	0.01M TBS( pH 7.4) with 1 % BSA, 0.02 % Proclin300 and 50 % Glycerol.
Preservative:	ProClin

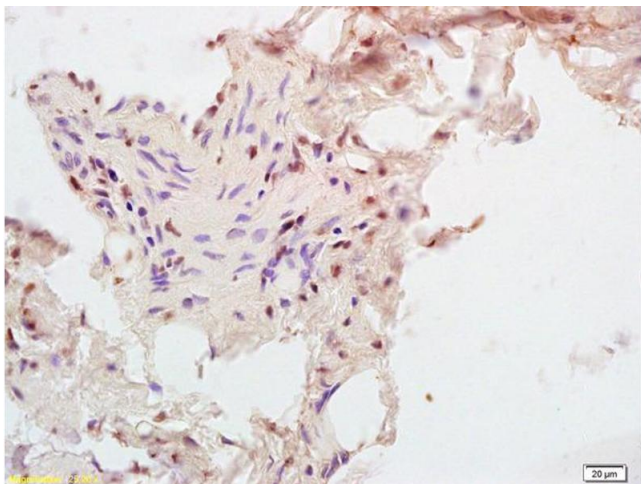
## Handling

Precaution of Use:	This product contains ProClin: a POISONOUS AND HAZARDOUS SUBSTANCE, which should be handled by trained staff only.
Storage:	4 °C, -20 °C
Storage Comment:	Shipped at 4°C. Store at -20°C for one year. Avoid repeated freeze/thaw cycles.
Expiry Date:	12 months

## Publications

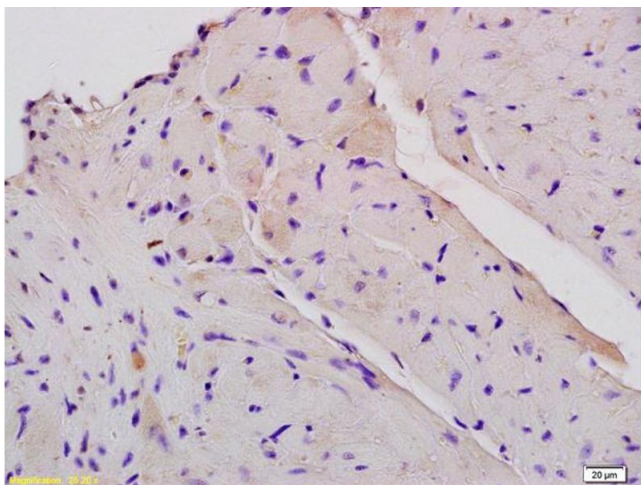
Product cited in:	Huebbe, Dose, Schloesser, Campbell, Glüer, Gupta, Ibrahim, Minihaane, Baines, Nebel, Rimbach: "Apolipoprotein E (APOE) genotype regulates body weight and fatty acid utilization- studies in gene targeted replacement mice." in: <b>Molecular nutrition &amp; food research</b> , (2014) ( <a href="#">PubMed</a> ).
-------------------	---

## Images



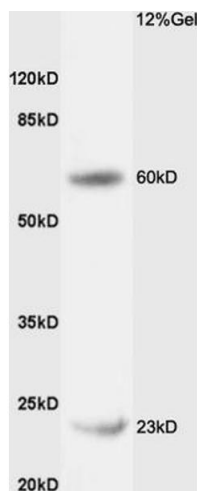
### Immunohistochemistry

**Image 1.** Formalin-fixed and paraffin embedded human rectal carcinoma tissue labeled with Anti-CPT1B Polyclonal Antibody, Unconjugated (ABIN708851) at 1:200, followed by conjugation to the secondary antibody and DAB staining



### Immunohistochemistry

**Image 2.** Formalin-fixed and paraffin embedded mouse heart tissue labeled with Anti-CPT1B Polyclonal Antibody, Unconjugated (ABIN708851) at 1:200, followed by conjugation to the secondary antibody and DAB staining



SDS-PAGE

**Image 3.** Rat liver lysates probed with Rabbit Anti-CPT1B Polyclonal Antibody (ABIN708851) at 1:200 in 4 °C. Followed by conjugation to secondary antibody at 1:3000 90min in 37 °C. Predicted band size: 83kD and observed band size: 23kD, 60kDa