

Datasheet for ABIN709121
anti-GPAM antibody (AA 611-710)[Go to Product page](#)

2 Images

Overview

Quantity:	100 µL
Target:	GPAM
Binding Specificity:	AA 611-710
Reactivity:	Human, Rat
Host:	Rabbit
Clonality:	Polyclonal
Conjugate:	This GPAM antibody is un-conjugated
Application:	Western Blotting (WB), ELISA, Immunofluorescence (Cultured Cells) (IF (cc)), Immunofluorescence (Paraffin-embedded Sections) (IF (p)), Immunohistochemistry (Paraffin-embedded Sections) (IHC (p)), Immunohistochemistry (Frozen Sections) (IHC (fro))

Product Details

Immunogen:	KLH conjugated synthetic peptide derived from human GPAM
Isotype:	IgG
Cross-Reactivity:	Human, Rat
Predicted Reactivity:	Mouse,Dog,Cow,Pig,Horse,Chicken,Rabbit
Purification:	Purified by Protein A.

Target Details

Target:	GPAM
---------	------

Target Details

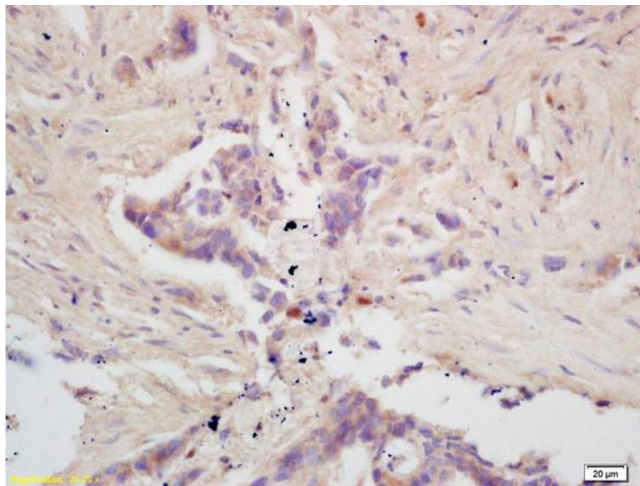
Alternative Name:	GPAM (GPAM Products)
Background:	Synonyms: GPAT, GPAT1, Glycerol-3-phosphate acyltransferase 1, mitochondrial, GPAT-1, GPAM, KIAA1560 Background: Esterifies acyl-group from acyl-ACP to the sn-1 position of glycerol-3-phosphate, an essential step in glycerolipid biosynthesis.
Gene ID:	57678
UniProt:	Q9HCL2
Pathways:	Activated T Cell Proliferation

Application Details

Application Notes:	WB 1:300-5000 ELISA 1:500-1000 IHC-P 1:200-400 IHC-F 1:100-500 IF(IHC-P) 1:50-200 IF(IHC-F) 1:50-200 IF(ICC) 1:50-200
Restrictions:	For Research Use only

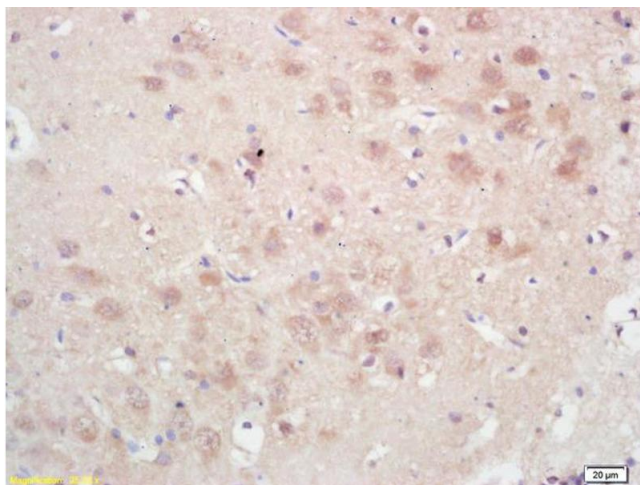
Handling

Format:	Liquid
Concentration:	1 µg/µL
Buffer:	0.01M TBS(pH 7.4) with 1 % BSA, 0.02 % Proclin300 and 50 % Glycerol.
Preservative:	ProClin
Precaution of Use:	This product contains ProClin: a POISONOUS AND HAZARDOUS SUBSTANCE, which should be handled by trained staff only.
Storage:	4 °C,-20 °C
Storage Comment:	Shipped at 4°C. Store at -20°C for one year. Avoid repeated freeze/thaw cycles.
Expiry Date:	12 months



Immunohistochemistry

Image 1. Formalin-fixed and paraffin embedded human colon carcinoma labeled with Rabbit Anti GPAM Polyclonal Antibody, Unconjugated (ABIN709121) at 1:200 followed by conjugation to the secondary antibody and DAB staining



Immunohistochemistry

Image 2. Formalin-fixed and paraffin embedded rat brain labeled with Rabbit Anti GPAM Polyclonal Antibody, Unconjugated (ABIN709121) at 1:200 followed by conjugation to the secondary antibody and DAB staining