



[Go to Product page](#)

Datasheet for ABIN7092686

## GUCY2C Protein (AA 24-430) (His tag)

### 3 Images

#### Overview

Quantity:	100 µg
Target:	GUCY2C
Protein Characteristics:	AA 24-430
Origin:	Human
Source:	HEK-293 Cells
Protein Type:	Recombinant
Purification tag / Conjugate:	This GUCY2C protein is labelled with His tag.

#### Product Details

Purpose:	Recombinant human GUCY2C protein with C-terminal 6xHis tag
Specificity:	GUCY2C (Ser24-Gln430) 6xHis tag
Characteristics:	Extracellular Domain Protein
Purification:	Purified from cell culture supernatant by affinity chromatography
Purity:	The purity of the protein is greater than 95 % as determined by SDS-PAGE and Coomassie blue staining.

#### Target Details

Target:	GUCY2C
Alternative Name:	GUCY2C ( <a href="#">GUCY2C Products</a> )
Background:	This gene encodes a transmembrane protein that functions as a receptor for endogenous

## Target Details

peptides guanylin and uroguanylin, and the heat-stable E. coli enterotoxin. The encoded protein activates the cystic fibrosis transmembrane conductance regulator. Mutations in this gene are associated with familial diarrhea (autosomal dominant) and meconium ileus (autosomal recessive). [provided by RefSeq, Nov 2016]

**Molecular Weight:** predicted molecular mass of 46.8 kDa after removal of the signal peptide. The apparent molecular mass of GUCY2C-His is 55-130 kDa due to glycosylation.

**UniProt:** [P25092](#)

## Application Details

**Restrictions:** For Research Use only

## Handling

**Format:** Lyophilized

**Buffer:** Lyophilized from sterile PBS, pH 7.4. Normally 5 % - 8 % trehalose is added as protectants before lyophilization.

**Storage:** -20 °C,-80 °C

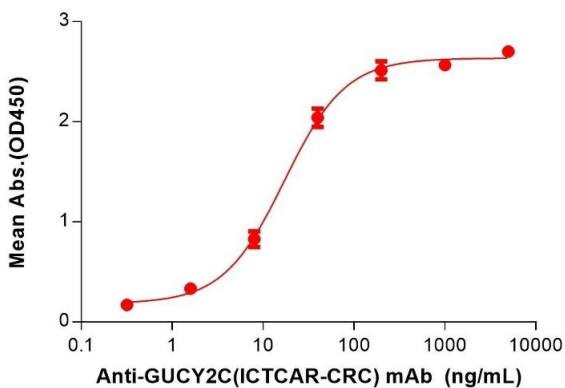
**Storage Comment:** Store at -20°C to -80°C for 12 months in lyophilized form. After reconstitution, if not intended for use within a month, aliquot and store at -80°C (Avoid repeated freezing and thawing). Lyophilized proteins are shipped at ambient temperature.

**Expiry Date:** 12 months

## Images

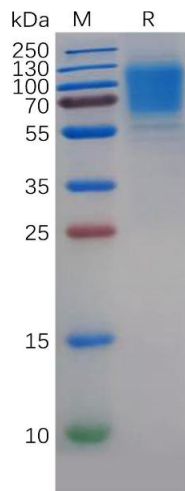
### Human GUCY2C, His Tagged protein ELISA

0.2 µg of Human GUCY2C, His tagged protein per well



### ELISA

**Image 1.** ELISA plate pre-coated by 2 µg/mL (100 µL/well) Human GC Protein, His Tag (ABIN7092686, ABIN7272328 and ABIN7272329) can bind Anti-GC(ICTCAR-CRC) mAb in a linear range of 1.60-40 ng/mL.

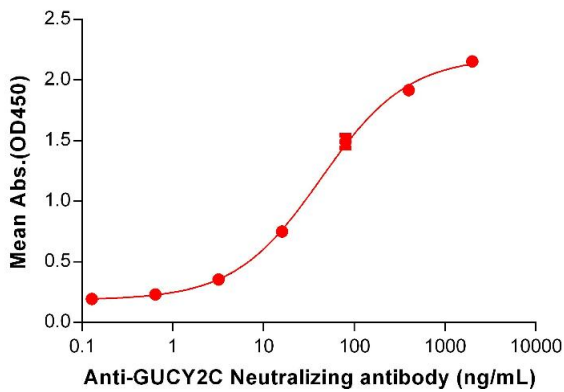


### SDS-PAGE

**Image 2.** Human GC Protein, His Tag on SDS-PAGE under reducing condition.

### Human GUCY2C, His tagged protein ELISA

0.1 µg of Human GUCY2C, His tagged protein per well



### ELISA

**Image 3.** ELISA plate pre-coated by 1 µg/mL (100 µL/well) Human GC protein, His Tag (ABIN7092686, ABIN7272328 and ABIN7272329) can bind Anti-GC Neutralizing antibody ([getskuurl sku"ABIN7093082 and ABIN7272612"]) in a linear range of 3.2-400 ng/mL.