

Datasheet for ABIN7092689

**K-RAS Protein (AA 2-185) (mFc Tag)**[Go to Product page](#)**1** Image

## Overview

Quantity:	100 µg
Target:	K-RAS (KRAS)
Protein Characteristics:	AA 2-185
Origin:	Human
Source:	HEK-293 Cells
Protein Type:	Recombinant
Purification tag / Conjugate:	This K-RAS protein is labelled with mFc Tag.

## Product Details

Purpose:	Recombinant human KRAS protein with C-terminal mouse Fc tag
Specificity:	KRAS (Thr2-Cys185) mFc (Pro99-Lys330)
Characteristics:	Extracellular Domain Protein
Purification:	Purified from cell culture supernatant by affinity chromatography
Purity:	The purity of the protein is greater than 95 % as determined by SDS-PAGE and Coomassie blue staining.

## Target Details

Target:	K-RAS (KRAS)
Alternative Name:	KRAS ( <a href="#">KRAS Products</a> )
Target Type:	Viral Protein

## Target Details

---

**Background:** This gene, a Kirsten ras oncogene homolog from the mammalian ras gene family, encodes a protein that is a member of the small GTPase superfamily. A single amino acid substitution is responsible for an activating mutation. The transforming protein that results is implicated in various malignancies, including lung adenocarcinoma, mucinous adenoma, ductal carcinoma of the pancreas and colorectal carcinoma. Alternative splicing leads to variants encoding two isoforms that differ in the C-terminal region. [provided by RefSeq, Jul 2008]

**Molecular Weight:** predicted molecular mass of 47.1 kDa after removal of the signal peptide. The apparent molecular mass of KRAS-mFc is 35-55 kDa due to glycosylation.

**UniProt:** [P01116](#)

## Application Details

---

**Restrictions:** For Research Use only

## Handling

---

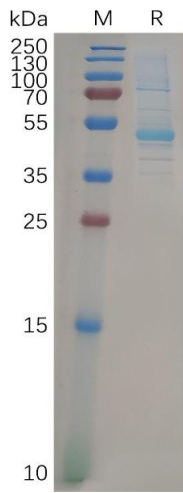
**Format:** Lyophilized

**Buffer:** Lyophilized from sterile PBS, pH 7.4. Normally 5 % - 8 % trehalose is added as protectants before lyophilization.

**Storage:** -20 °C, -80 °C

**Storage Comment:** Store at -20°C to -80°C for 12 months in lyophilized form. After reconstitution, if not intended for use within a month, aliquot and store at -80°C (Avoid repeated freezing and thawing).  
Lyophilized proteins are shipped at ambient temperature.

**Expiry Date:** 12 months



### SDS-PAGE

**Image 1.** Human KRAS Protein, mFc Tag on SDS-PAGE under reducing condition.