



[Go to Product page](#)

Datasheet for ABIN7092696

BTLA Protein (AA 31-150) (His tag)

3 Images

Overview

Quantity:	100 µg
Target:	BTLA
Protein Characteristics:	AA 31-150
Origin:	Human
Source:	HEK-293 Cells
Protein Type:	Recombinant
Purification tag / Conjugate:	This BTLA protein is labelled with His tag.

Product Details

Purpose:	Recombinant human BTLA protein with C-terminal 6xHis tag
Specificity:	Human BTLA (Lys31-Ser150) 6xHis tag
Characteristics:	Extracellular Domain Protein
Purification:	Purified from cell culture supernatant by affinity chromatography
Purity:	The purity of the protein is greater than 95 % as determined by SDS-PAGE and Coomassie blue staining.

Target Details

Target:	BTLA
Alternative Name:	BTLA (BTLA Products)
Background:	This gene encodes a member of the immunoglobulin superfamily. The encoded protein

Target Details

contains a single immunoglobulin (Ig) domain and is a receptor that relays inhibitory signals to suppress the immune response. Alternative splicing results in multiple transcript variants. Polymorphisms in this gene have been associated with an increased risk of rheumatoid arthritis.

Molecular Weight: predicted molecular mass of 14.6 kDa after removal of the signal peptide. The apparent molecular mass of Human-BTLA-His is 25-35 kDa due to glycosylation.

Gene ID: 151888

UniProt: [Q7Z6A9](#)

Pathways: [Cancer Immune Checkpoints](#)

Application Details

Restrictions: For Research Use only

Handling

Format: Lyophilized

Buffer: Lyophilized from sterile PBS, pH 7.4. Normally 5 % - 8 % trehalose is added as protectants before lyophilization.

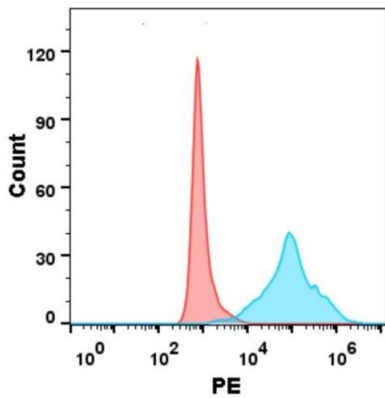
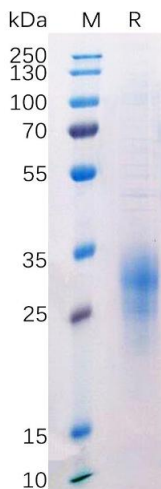
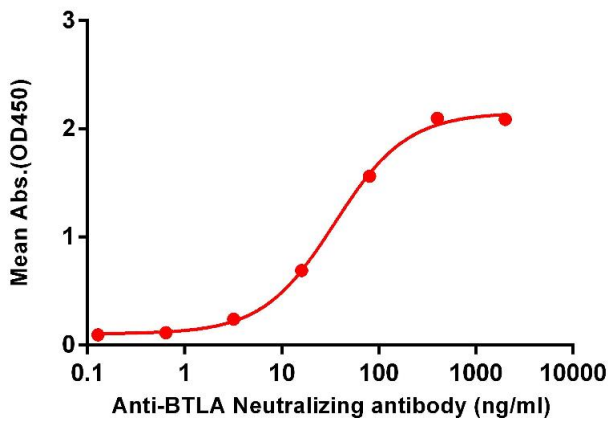
Storage: -20 °C, -80 °C

Storage Comment: Store at -20°C to -80°C for 12 months in lyophilized form. After reconstitution, if not intended for use within a month, aliquot and store at -80°C (Avoid repeated freezing and thawing).
Lyophilized proteins are shipped at ambient temperature.

Expiry Date: 12 months

Human BTLA, His Tagged protein ELISA

0.1 µg of Human BTLA, His Tagged protein per well



ELISA

Image 1. ELISA plate pre-coated by 1 µg/mL (100 µL/well) Human BTLA , His tagged protein (ABIN7092696, ABIN7272196 and ABIN7272197) can bind Anti-BTLA Neutralizing antibody ABIN7093071 and ABIN7272601 in a linear range of 16-80 ng/mL.

SDS-PAGE

Image 2. Human BTLA Protein, His Tag on SDS-PAGE under reducing condition.

Flow Cytometry

Image 3. Flow cytometry analysis with 15 µg/mL Human BTLA Protein, His tag (ABIN7092696, ABIN7272196 and ABIN7272197) on Expi293 cells transfected with human HVEM (Blue histogram) or Expi293 transfected with irrelevant protein (Red histogram).