

Datasheet for ABIN7092715
M-CSF/CSF1 Protein (AA 33-255) (Fc Tag)



[Go to Product page](#)

4 Images

Overview

Quantity:	100 µg
Target:	M-CSF/CSF1 (CSF1)
Protein Characteristics:	AA 33-255
Origin:	Human
Source:	HEK-293 Cells
Protein Type:	Recombinant
Purification tag / Conjugate:	This M-CSF/CSF1 protein is labelled with Fc Tag.

Product Details

Purpose:	Recombinant Human M-CSF Protein with C-terminal human Fc tag
Specificity:	M-CSF (Glu33-Arg255) hFc (Glu99-Ala330)
Characteristics:	Extracellular Domain Protein
Purification:	Purified from cell culture supernatant by affinity chromatography
Purity:	The purity of the protein is greater than 95 % as determined by SDS-PAGE and Coomassie blue staining.

Target Details

Target:	M-CSF/CSF1 (CSF1)
Alternative Name:	M-CSF (CSF1 Products)
Background:	The protein encoded by this gene is a cytokine that controls the production, differentiation, and

Target Details

function of macrophages. The active form of the protein is found extracellularly as a disulfide-linked homodimer, and is thought to be produced by proteolytic cleavage of membrane-bound precursors. The encoded protein may be involved in development of the placenta. Alternate splicing results in multiple transcript variants. [provided by RefSeq, Sep 2011]

Molecular Weight: predicted molecular mass of 51.3 kDa after removal of the signal peptide. The apparent molecular mass of M-CSF-hFc is 55-70 kDa due to glycosylation.

UniProt: [P09603](#)

Pathways: [RTK Signaling](#)

Application Details

Restrictions: For Research Use only

Handling

Format: Lyophilized

Buffer: Lyophilized from sterile PBS, pH 7.4. Normally 5 % - 8 % trehalose is added as protectants before lyophilization.

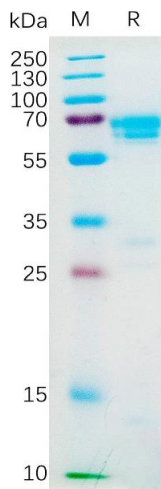
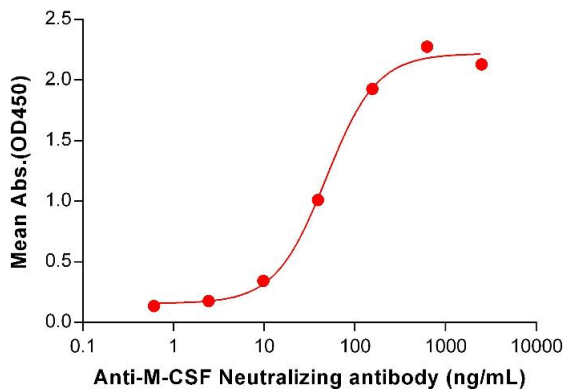
Storage: -20 °C, -80 °C

Storage Comment: Store at -20°C to -80°C for 12 months in lyophilized form. After reconstitution, if not intended for use within a month, aliquot and store at -80°C (Avoid repeated freezing and thawing). Lyophilized proteins are shipped at ambient temperature.

Expiry Date: 12 months

Human M-CSF, hFc Tagged protein ELISA

0.2 µg of Human M-CSF, hFc tagged protein per well



ELISA

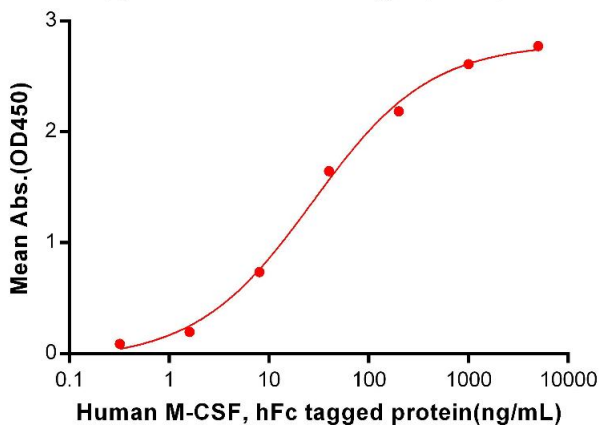
Image 1. ELISA plate pre-coated by 2 µg/mL (100 µL/well) Human M-CSF Protein, hFc Tag (ABIN7092715, ABIN7272254 and ABIN7272255) can bind Anti-M-CSF Neutralizing antibody ABIN7478003 and ABIN7490942 in a linear range of 9.77-156.25 ng/mL.

SDS-PAGE

Image 2. Human M-CSF Protein, hFc Tag on SDS-PAGE under reducing condition.

Human M-CSF, hFc tagged protein ELISA

0.2 µg of Human CSF1R, His tagged protein per well



ELISA

Image 3. ELISA plate pre-coated by 2 µg/mL (100 µL/well) Human R, His tagged protein ABIN6961125, ABIN7042279 and ABIN7042280 can bind Human M-CSF, hFc Tagged protein (ABIN7092715, ABIN7272254 and ABIN7272255) in a linear range of 0.32-200 ng/mL.

Please check the [product details page](#) for more images. Overall 4 images are available for ABIN7092715.