

Datasheet for ABIN7092726

**KIT Ligand Protein (KITLG) (AA 26-214) (Fc Tag)**[Go to Product page](#)**2** Images

## Overview

Quantity:	100 µg
Target:	KIT Ligand (KITLG)
Protein Characteristics:	AA 26-214
Origin:	Human
Source:	HEK-293 Cells
Protein Type:	Recombinant
Purification tag / Conjugate:	This KIT Ligand protein is labelled with Fc Tag.

## Product Details

Purpose:	Recombinant human SCF protein with C-terminal human Fc tag
Specificity:	SCF (Glu26-His214) hFc (Glu99-Ala330)
Characteristics:	Extracellular Domain Protein
Purification:	Purified from cell culture supernatant by affinity chromatography
Purity:	The purity of the protein is greater than 95 % as determined by SDS-PAGE and Coomassie blue staining.

## Target Details

Target:	KIT Ligand (KITLG)
Alternative Name:	SCF ( <a href="#">KITLG Products</a> )
Background:	This gene encodes the ligand of the tyrosine-kinase receptor encoded by the KIT locus. This

## Target Details

---

ligand is a pleiotropic factor that acts in utero in germ cell and neural cell development, and hematopoiesis, all believed to reflect a role in cell migration. In adults, it functions pleiotropically, while mostly noted for its continued requirement in hematopoiesis. Two transcript variants encoding different isoforms have been found for this gene. [provided by RefSeq, Jul 2008]

---

Molecular Weight: predicted molecular mass of 47.2 kDa after removal of the signal peptide. The apparent molecular mass of SCF-hFc is 55-75 kDa due to glycosylation.

---

UniProt: [P21583](#)

---

Pathways: [RTK Signaling](#), [Fc-epsilon Receptor Signaling Pathway](#), [EGFR Signaling Pathway](#), [Neurotrophin Signaling Pathway](#)

## Application Details

---

Restrictions: For Research Use only

## Handling

---

Format: Lyophilized

---

Buffer: Lyophilized from sterile PBS, pH 7.4. Normally 5% - 8% trehalose is added as protectants before lyophilization.

---

Storage: -20 °C, -80 °C

---

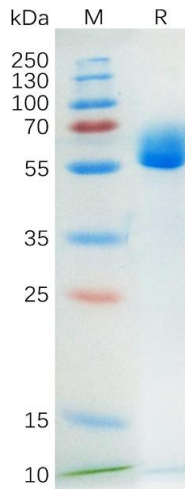
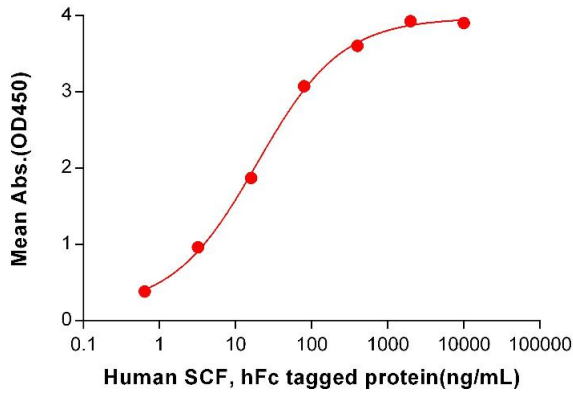
Storage Comment: Store at -20°C to -80°C for 12 months in lyophilized form. After reconstitution, if not intended for use within a month, aliquot and store at -80°C (Avoid repeated freezing and thawing).  
Lyophilized proteins are shipped at ambient temperature.

---

Expiry Date: 12 months

### Human SCF, hFc tagged protein ELISA

0.2 µg of Human CD117, His tagged protein per well



### ELISA

**Image 1.** ELISA plate pre-coated by 1 µg/mL (100 µL/well) Human CD117, His tagged protein ABIN6964116, ABIN7042487 and ABIN7042488 can bind Human SCF, hFc tagged protein (ABIN7092726, ABIN7272264 and ABIN7272265) in a linear range of 3.2-400 ng/mL.

### SDS-PAGE

**Image 2.** Human SCF Protein, hFc Tag on SDS-PAGE under reducing condition.