



[Go to Product page](#)

Datasheet for ABIN7092727

GM-CSF Protein (AA 18-144) (Fc Tag)

2 Images

Overview

Quantity:	100 µg
Target:	GM-CSF (CSF2)
Protein Characteristics:	AA 18-144
Origin:	Human
Source:	HEK-293 Cells
Protein Type:	Recombinant
Purification tag / Conjugate:	This GM-CSF protein is labelled with Fc Tag.

Product Details

Purpose:	Recombinant Human GM-CSF Protein with C-terminal human Fc tag
Specificity:	GM-CSF (Ala18-Glu144) hFc (Glu99-Ala330)
Characteristics:	Extracellular Domain Protein
Purification:	Purified from cell culture supernatant by affinity chromatography
Purity:	The purity of the protein is greater than 95 % as determined by SDS-PAGE and Coomassie blue staining.

Target Details

Target:	GM-CSF (CSF2)
Alternative Name:	GM-CSF (CSF2 Products)
Background:	The protein encoded by this gene is a cytokine that controls the production, differentiation, and

Target Details

function of granulocytes and macrophages. The active form of the protein is found extracellularly as a homodimer. This gene has been localized to a cluster of related genes at chromosome region 5q31, which is known to be associated with interstitial deletions in the 5q-syndrome and acute myelogenous leukemia. Other genes in the cluster include those encoding interleukins 4, 5, and 13. This gene plays a role in promoting tissue inflammation. Elevated levels of cytokines, including the one produced by this gene, have been detected in SARS-CoV-2 infected patients that develop acute respiratory distress syndrome. Mice deficient in this gene or its receptor develop pulmonary alveolar proteinosis. [provided by RefSeq, Aug 2020]

Molecular Weight: predicted molecular mass of 40.6 kDa after removal of the signal peptide. The apparent molecular mass of GM-CSF-hFc is 35-70 kDa due to glycosylation.

UniProt: [P04141](#)

Pathways: [JAK-STAT Signaling](#), [Cellular Response to Molecule of Bacterial Origin](#)

Application Details

Restrictions: For Research Use only

Handling

Format: Lyophilized

Buffer: Lyophilized from sterile PBS, pH 7.4. Normally 5% - 8% trehalose is added as protectants before lyophilization.

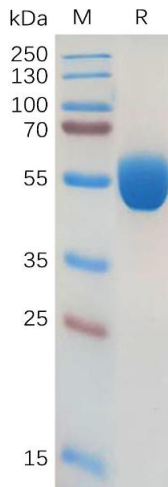
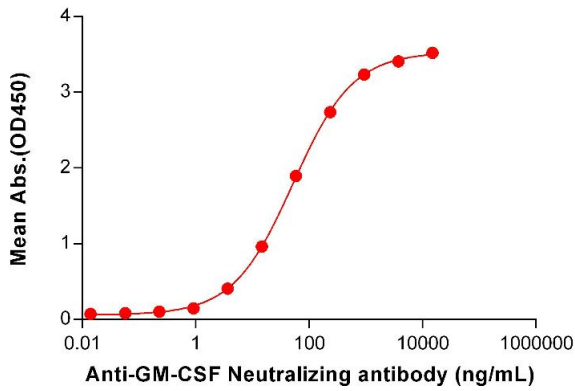
Storage: -20 °C, -80 °C

Storage Comment: Store at -20°C to -80°C for 12 months in lyophilized form. After reconstitution, if not intended for use within a month, aliquot and store at -80°C (Avoid repeated freezing and thawing). Lyophilized proteins are shipped at ambient temperature.

Expiry Date: 12 months

Human GM-CSF, hFc Tagged protein ELISA

0.2 µg of Human GM-CSF, hFc tagged protein per well



ELISA

Image 1. ELISA plate pre-coated by 2 µg/mL (100 µL/well) Human GM-CSF Protein, hFc Tag (ABIN7092727, ABIN7272292 and ABIN7272293) can bind Anti-GM-CSF Neutralizing antibody ABIN7478022 and ABIN7490990 in a linear range of 0.92-937.50 ng/mL.

SDS-PAGE

Image 2. Human GM-CSF Protein, hFc Tag on SDS-PAGE under reducing condition.