

Datasheet for ABIN7092730

**M-CSF/CSF1 Protein (AA 33-255) (mFc Tag)**[Go to Product page](#)**2** Images

## Overview

Quantity:	100 µg
Target:	M-CSF/CSF1 (CSF1)
Protein Characteristics:	AA 33-255
Origin:	Human
Source:	HEK-293 Cells
Protein Type:	Recombinant
Purification tag / Conjugate:	This M-CSF/CSF1 protein is labelled with mFc Tag.

## Product Details

Purpose:	Recombinant Human M-CSF with C-terminal mouse Fc tag
Specificity:	M-CSF (Glu33-Arg255) mFc (Pro99-Lys330)
Characteristics:	Extracellular Domain Protein
Purification:	Purified from cell culture supernatant by affinity chromatography
Purity:	The purity of the protein is greater than 95 % as determined by SDS-PAGE and Coomassie blue staining.

## Target Details

Target:	M-CSF/CSF1 (CSF1)
Alternative Name:	M-CSF ( <a href="#">CSF1 Products</a> )
Background:	The protein encoded by this gene is a cytokine that controls the production, differentiation, and

## Target Details

---

function of macrophages. The active form of the protein is found extracellularly as a disulfide-linked homodimer, and is thought to be produced by proteolytic cleavage of membrane-bound precursors. The encoded protein may be involved in development of the placenta. Alternate splicing results in multiple transcript variants. [provided by RefSeq, Sep 2011]

Molecular Weight: predicted molecular mass of 51.2 kDa after removal of the signal peptide. The apparent molecular mass of M-CSF-mFc is 55-75 kDa due to glycosylation.

UniProt: [P09603](#)

Pathways: [RTK Signaling](#)

## Application Details

---

Restrictions: For Research Use only

## Handling

---

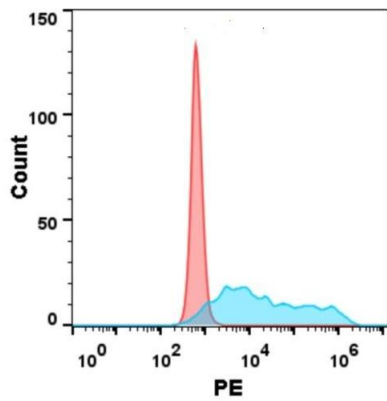
Format: Lyophilized

Buffer: Lyophilized from sterile PBS, pH 7.4. Normally 5 % - 8 % trehalose is added as protectants before lyophilization.

Storage: -20 °C, -80 °C

Storage Comment: Store at -20°C to -80°C for 12 months in lyophilized form. After reconstitution, if not intended for use within a month, aliquot and store at -80°C (Avoid repeated freezing and thawing). Lyophilized proteins are shipped at ambient temperature.

Expiry Date: 12 months



### Flow Cytometry

**Image 1.** Flow cytometry analysis with 1 µg/mL Human M-CSF Protein, mFc tag (ABIN7092730, ABIN7272276 and ABIN7272277) on Expi293 cells transfected with human R (Blue histogram) or Expi293 transfected with irrelevant protein (Red histogram).



### SDS-PAGE

**Image 2.** Human M-CSF Protein, mFc Tag on SDS-PAGE under reducing condition.