



[Go to Product page](#)

Datasheet for ABIN7092731

M-CSF/CSF1 Protein (AA 33-255) (His tag)

3 Images

Overview

Quantity:	100 µg
Target:	M-CSF/CSF1 (CSF1)
Protein Characteristics:	AA 33-255
Origin:	Human
Source:	HEK-293 Cells
Protein Type:	Recombinant
Purification tag / Conjugate:	This M-CSF/CSF1 protein is labelled with His tag.

Product Details

Purpose:	Recombinant Human M-CSF with C-terminal 6xHis tag
Specificity:	M-CSF (Glu33-Arg255) 6xHis tag
Characteristics:	Extracellular Domain Protein
Purification:	Purified from cell culture supernatant by affinity chromatography
Purity:	The purity of the protein is greater than 95 % as determined by SDS-PAGE and Coomassie blue staining.

Target Details

Target:	M-CSF/CSF1 (CSF1)
Alternative Name:	M-CSF (CSF1 Products)
Background:	The protein encoded by this gene is a cytokine that controls the production, differentiation, and

Target Details

function of macrophages. The active form of the protein is found extracellularly as a disulfide-linked homodimer, and is thought to be produced by proteolytic cleavage of membrane-bound precursors. The encoded protein may be involved in development of the placenta. Alternate splicing results in multiple transcript variants. [provided by RefSeq, Sep 2011]

Molecular Weight: predicted molecular mass of 26 kDa after removal of the signal peptide. The apparent molecular mass of M-CSF-His is 25-55 kDa due to glycosylation.

UniProt: [P09603](#)

Pathways: [RTK Signaling](#)

Application Details

Restrictions: For Research Use only

Handling

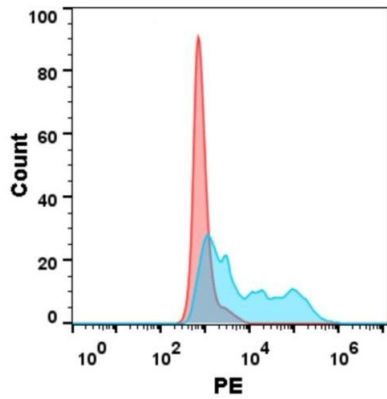
Format: Lyophilized

Buffer: Lyophilized from sterile PBS, pH 7.4. Normally 5 % - 8 % trehalose is added as protectants before lyophilization.

Storage: -20 °C, -80 °C

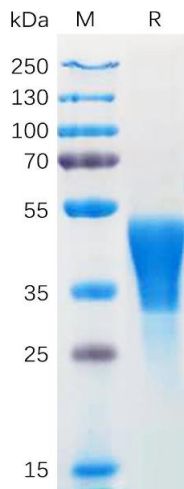
Storage Comment: Store at -20°C to -80°C for 12 months in lyophilized form. After reconstitution, if not intended for use within a month, aliquot and store at -80°C (Avoid repeated freezing and thawing).
Lyophilized proteins are shipped at ambient temperature.

Expiry Date: 12 months



Flow Cytometry

Image 1. Flow cytometry analysis with 1 µg/mL Human M-CSF Protein, His tag (ABIN7092731, ABIN7272278 and ABIN7272279) on Expi293 cells transfected with human R (Blue histogram) or Expi293 transfected with irrelevant protein (Red histogram).

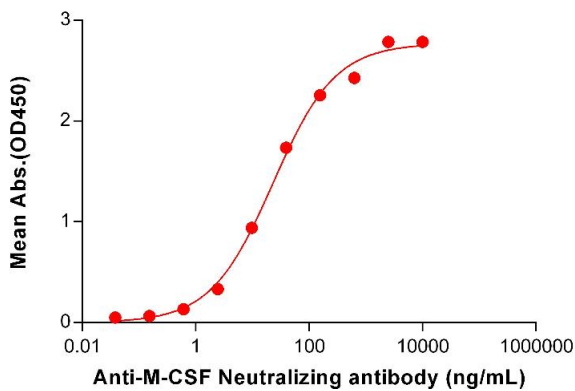


SDS-PAGE

Image 2. Human M-CSF Protein, His Tag on SDS-PAGE under reducing condition.

Human M-CSF, His Tagged protein ELISA

0.2 µg of Human M-CSF, His tagged protein per well



ELISA

Image 3. ELISA plate pre-coated by 2 µg/mL (100 µL/well) Human M-CSF Protein, His Tag (ABIN7092731, ABIN7272278 and ABIN7272279) can bind Anti-M-CSF Neutralizing antibody ABIN7478003 and ABIN7490942 in a linear range of 2.44-156.25 ng/mL.