

Datasheet for ABIN7092735
PVRL2 Protein (AA 32-360) (mFc Tag)



[Go to Product page](#)

3 Images

Overview

Quantity:	100 µg
Target:	PVRL2
Protein Characteristics:	AA 32-360
Origin:	Human
Source:	HEK-293 Cells
Protein Type:	Recombinant
Purification tag / Conjugate:	This PVRL2 protein is labelled with mFc Tag.

Product Details

Purpose:	Recombinant Human CD112 with C-terminal mouse Fc tag
Specificity:	CD112 (Gln32-Gly360) mFc (Pro99-Lys330)
Characteristics:	Extracellular Domain Protein
Purification:	Purified from cell culture supernatant by affinity chromatography
Purity:	The purity of the protein is greater than 95 % as determined by SDS-PAGE and Coomassie blue staining.

Target Details

Target:	PVRL2
Alternative Name:	CD112 (PVRL2 Products)
Background:	This gene encodes a single-pass type I membrane glycoprotein with two Ig-like C2-type

Target Details

domains and an Ig-like V-type domain. This protein is one of the plasma membrane components of adherens junctions. It also serves as an entry for certain mutant strains of herpes simplex virus and pseudorabies virus, and it is involved in cell to cell spreading of these viruses. Variations in this gene have been associated with differences in the severity of multiple sclerosis. Alternate transcriptional splice variants, encoding different isoforms, have been characterized.

Molecular Weight: predicted molecular mass of 61.4 kDa after removal of the signal peptide. The apparent molecular mass of CD112-mFc is 35-55 kDa due to glycosylation.

UniProt: [Q92692](#)

Pathways: [Regulation of Leukocyte Mediated Immunity](#), [Positive Regulation of Immune Effector Process](#), [Cell-Cell Junction Organization](#)

Application Details

Restrictions: For Research Use only

Handling

Format: Lyophilized

Buffer: Lyophilized from sterile PBS, pH 7.4. Normally 5 % - 8 % trehalose is added as protectants before lyophilization.

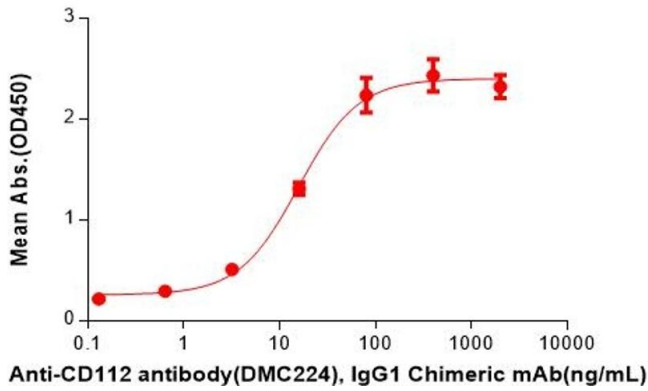
Storage: -20 °C, -80 °C

Storage Comment: Store at -20°C to -80°C for 12 months in lyophilized form. After reconstitution, if not intended for use within a month, aliquot and store at -80°C (Avoid repeated freezing and thawing). Lyophilized proteins are shipped at ambient temperature.

Expiry Date: 12 months

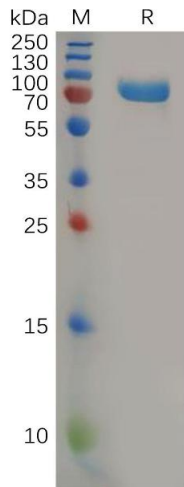
Human CD112,mFc Tagged protein ELISA

0.2 µg of Human CD112, mFc tagged protein per well



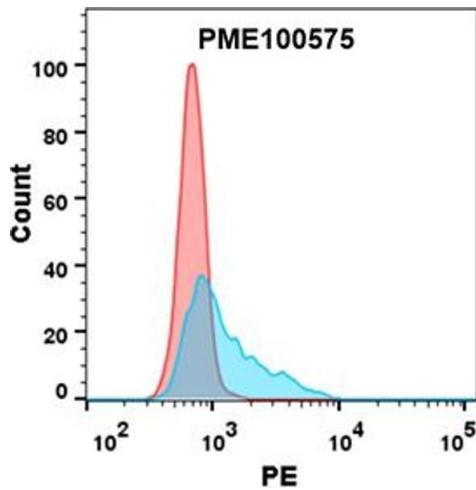
ELISA

Image 1. ELISA plate pre-coated by 2 µg/mL (100 µL/well) Human CD112 Protein, mFc Tag (ABIN7092735, ABIN7272306 and ABIN7272307) can bind Anti-CD112 antibody, IgG1 Chimeric mAb in a linear range of 3.20-80 ng/mL.



SDS-PAGE

Image 2. Human CD112 Protein, mFc Tag on SDS-PAGE under reducing condition.



Flow Cytometry

Image 3. Flow cytometry analysis with 15 µg/mL Human CD112 Protein, mFc tag (ABIN7092735, ABIN7272306 and ABIN7272307) on Expi293 cells transfected with human PVRIG (Blue histogram) or Expi293 transfected with irrelevant protein (Red histogram).