

Datasheet for ABIN7092771

EPH Receptor A5 Protein (EPHA5) (AA 25-573) (His tag)[Go to Product page](#)**1** Image

Overview

Quantity:	100 µg
Target:	EPH Receptor A5 (EPHA5)
Protein Characteristics:	AA 25-573
Origin:	Human
Source:	HEK-293 Cells
Protein Type:	Recombinant
Purification tag / Conjugate:	This EPH Receptor A5 protein is labelled with His tag.

Product Details

Purpose:	Recombinant human EPHA5 protein with C-terminal 6xHis tag
Specificity:	EPHA5 (Pro25-Pro573) 6xHis tag
Characteristics:	Extracellular Domain Protein
Purification:	Purified from cell culture supernatant by affinity chromatography
Purity:	The purity of the protein is greater than 95 % as determined by SDS-PAGE and Coomassie blue staining.

Target Details

Target:	EPH Receptor A5 (EPHA5)
Alternative Name:	EPHA5 (EPHA5 Products)
Background:	This gene belongs to the ephrin receptor subfamily of the protein-tyrosine kinase family. EPH

Target Details

and EPH-related receptors have been implicated in mediating developmental events, particularly in the nervous system. Receptors in the EPH subfamily typically have a single kinase domain and an extracellular region containing a Cys-rich domain and 2 fibronectin type III repeats. The ephrin receptors are divided into 2 groups based on the similarity of their extracellular domain sequences and their affinities for binding ephrin-A and ephrin-B ligands. Alternatively spliced transcript variants encoding different isoforms have been described. [provided by RefSeq, Aug 2013]

Molecular Weight: predicted molecular mass of 61.6 kDa after removal of the signal peptide. The apparent molecular mass of EPHA5-His is 70-100 kDa due to glycosylation.

UniProt: [P54756](#)

Pathways: [RTK Signaling](#)

Application Details

Restrictions: For Research Use only

Handling

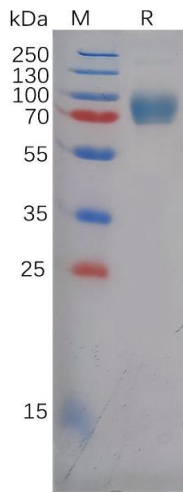
Format: Lyophilized

Buffer: Lyophilized from sterile PBS, pH 7.4. Normally 5 % - 8 % trehalose is added as protectants before lyophilization.

Storage: -20 °C,-80 °C

Storage Comment: Store at -20°C to -80°C for 12 months in lyophilized form. After reconstitution, if not intended for use within a month, aliquot and store at -80°C (Avoid repeated freezing and thawing). Lyophilized proteins are shipped at ambient temperature.

Expiry Date: 12 months



SDS-PAGE

Image 1. Human E Protein, His Tag on SDS-PAGE under reducing condition.