

Datasheet for ABIN7092775
GAS6 Protein (AA 31-678) (His tag)



[Go to Product page](#)

2 Images

Overview

Quantity:	100 µg
Target:	GAS6
Protein Characteristics:	AA 31-678
Origin:	Human
Source:	HEK-293 Cells
Protein Type:	Recombinant
Purification tag / Conjugate:	This GAS6 protein is labelled with His tag.

Product Details

Purpose:	Recombinant human GAS6 protein with C-terminal 6xHis tag
Specificity:	GAS6 (Ala31-Ala678) 6xHis tag
Characteristics:	Extracellular Domain Protein
Purification:	Purified from cell culture supernatant by affinity chromatography
Purity:	The purity of the protein is greater than 85 % as determined by SDS-PAGE and Coomassie blue staining.

Target Details

Target:	GAS6
Alternative Name:	GAS6 (GAS6 Products)
Background:	This gene encodes a gamma-carboxyglutamic acid (Gla)-containing protein thought to be

Target Details

involved in the stimulation of cell proliferation. This gene is frequently overexpressed in many cancers and has been implicated as an adverse prognostic marker. Elevated protein levels are additionally associated with a variety of disease states, including venous thromboembolic disease, systemic lupus erythematosus, chronic renal failure, and preeclampsia. [provided by RefSeq, Aug 2014]

Molecular Weight: predicted molecular mass of 72.7 kDa after removal of the signal peptide. The apparent molecular mass of GAS6-His is 70-100 kDa due to glycosylation.

UniProt: [Q14393](#)

Pathways: [RTK Signaling](#), [Carbohydrate Homeostasis](#), [Production of Molecular Mediator of Immune Response](#)

Application Details

Restrictions: For Research Use only

Handling

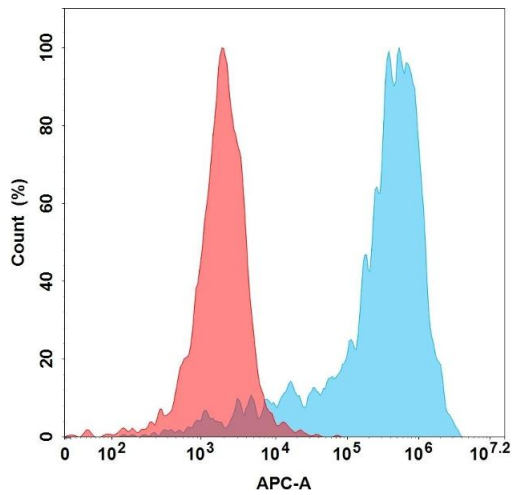
Format: Lyophilized

Buffer: Lyophilized from sterile PBS, pH 7.4. Normally 5 % - 8 % trehalose is added as protectants before lyophilization.

Storage: -20 °C, -80 °C

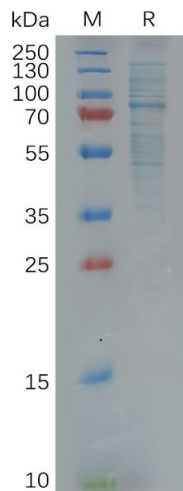
Storage Comment: Store at -20°C to -80°C for 12 months in lyophilized form. After reconstitution, if not intended for use within a month, aliquot and store at -80°C (Avoid repeated freezing and thawing).
Lyophilized proteins are shipped at ambient temperature.

Expiry Date: 12 months



Flow Cytometry

Image 1. Flow cytometry analysis with 15 µg/mL Human Protein, His Tag (ABIN7092775, ABIN7272154 and ABIN7272155) on Expi293 cells transfected with Human AXL protein (Blue histogram) or Expi293 transfected with irrelevant protein (Red histogram).



SDS-PAGE

Image 2. Human Protein, His Tag on SDS-PAGE under reducing condition.