

Datasheet for ABIN7092781

FCRL5 Protein (AA 16-850) (His tag)[Go to Product page](#)**2** Images

Overview

Quantity:	100 µg
Target:	FCRL5
Protein Characteristics:	AA 16-850
Origin:	Human
Source:	HEK-293 Cells
Protein Type:	Recombinant
Purification tag / Conjugate:	This FCRL5 protein is labelled with His tag.

Product Details

Purpose:	Recombinant human FCRL5 protein with C-terminal 6xHis tag
Specificity:	FCRL5 (Gln16-Thr850) 6xHis tag
Characteristics:	Extracellular Domain Protein
Purification:	Purified from cell culture supernatant by affinity chromatography
Purity:	The purity of the protein is greater than 85 % as determined by SDS-PAGE and Coomassie blue staining.

Target Details

Target:	FCRL5
Alternative Name:	FCRL5 (FCRL5 Products)
Background:	This gene encodes a member of the immunoglobulin receptor superfamily and the Fc-receptor

Target Details

like family. This gene and several other Fc receptor-like gene members are clustered on the long arm of chromosome 1. The encoded protein is a single-pass type I membrane protein and contains 8 immunoglobulin-like C2-type domains. This gene is implicated in B cell development and lymphomagenesis. Alternatively spliced transcript variants encoding different isoforms have been identified. [provided by RefSeq, Sep 2010]

Molecular Weight: predicted molecular mass of 92.1 kDa after removal of the signal peptide. The apparent molecular mass of FCRL5-His is 100-130 kDa due to glycosylation.

UniProt: [Q96RD9](#)

Application Details

Restrictions: For Research Use only

Handling

Format: Lyophilized

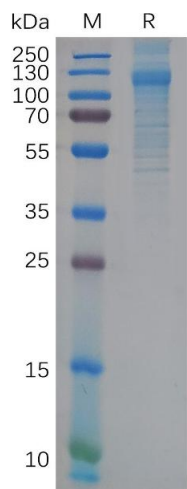
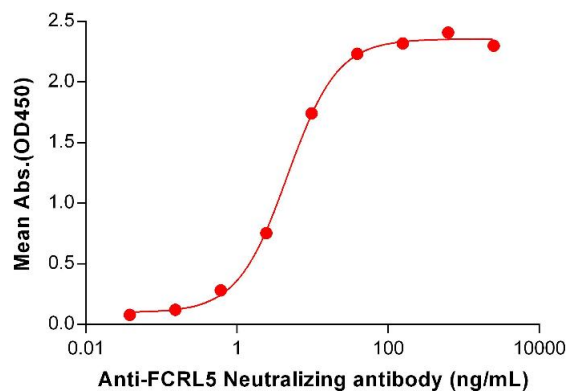
Buffer: Lyophilized from sterile PBS, pH 7.4. Normally 5 % - 8 % trehalose is added as protectants before lyophilization.

Storage: -20 °C,-80 °C

Storage Comment: Store at -20°C to -80°C for 12 months in lyophilized form. After reconstitution, if not intended for use within a month, aliquot and store at -80°C (Avoid repeated freezing and thawing).
Lyophilized proteins are shipped at ambient temperature.

Expiry Date: 12 months

Human FCRL5, His Tagged protein ELISA
0.2 µg of Human FCRL5, His tagged protein per well



ELISA

Image 1. ELISA plate pre-coated by 2 µg/mL (100 µL/well) Human F Protein, His Tag (ABIN7092781, ABIN7272386 and ABIN7272387) can bind Anti-F Neutralizing antibody ABIN7477992 and ABIN7490924 in a linear range of 0.61-39.06 ng/mL.

SDS-PAGE

Image 2. Human F Protein, His Tag on SDS-PAGE under reducing condition.