

Datasheet for ABIN7092803
NEFL Protein (AA 89-400) (His tag)



[Go to Product page](#)

2 Images

Overview

Quantity:	100 µg
Target:	NEFL
Protein Characteristics:	AA 89-400
Origin:	Human
Source:	HEK-293 Cells
Protein Type:	Recombinant
Purification tag / Conjugate:	This NEFL protein is labelled with His tag.

Product Details

Purpose:	Recombinant human NEFL(89-400) protein with N-terminal 6xHis tag
Specificity:	6xHis tag NEFL (Gln89-Leu400)
Characteristics:	Extracellular Domain Protein
Purification:	Purified from cell culture supernatant by affinity chromatography
Purity:	The purity of the protein is greater than 85 % as determined by SDS-PAGE and Coomassie blue staining.

Target Details

Target:	NEFL
Alternative Name:	NEFL (NEFL Products)
Background:	Neurofilaments are type IV intermediate filament heteropolymers composed of light, medium,

Target Details

and heavy chains. Neurofilaments comprise the axoskeleton and they functionally maintain the neuronal caliber. They may also play a role in intracellular transport to axons and dendrites. This gene encodes the light chain neurofilament protein. Mutations in this gene cause Charcot-Marie-Tooth disease types 1F (CMT1F) and 2E (CMT2E), disorders of the peripheral nervous system that are characterized by distinct neuropathies. A pseudogene has been identified on chromosome Y. [provided by RefSeq, Oct 2008]

Molecular Weight: predicted molecular mass of 36.9 kDa after removal of the signal peptide. The apparent molecular mass of His-NEFL(89-400) is 35-55 kDa due to glycosylation.

UniProt: [P07196](#)

Application Details

Restrictions: For Research Use only

Handling

Format: Lyophilized

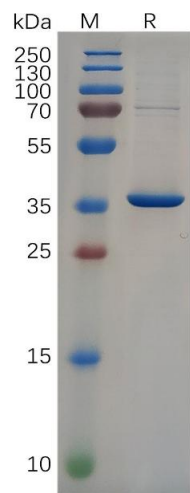
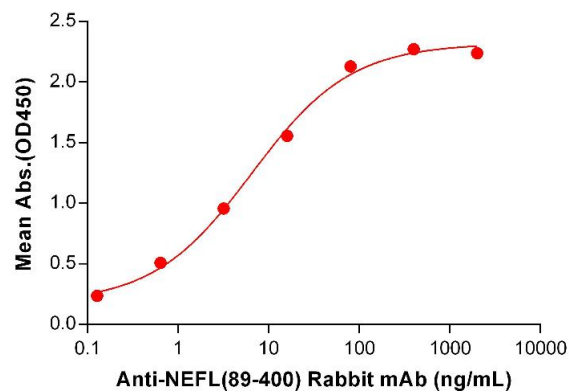
Buffer: Lyophilized from sterile PBS, pH 7.4. Normally 5 % - 8 % trehalose is added as protectants before lyophilization.

Storage: -20 °C,-80 °C

Storage Comment: Store at -20°C to -80°C for 12 months in lyophilized form. After reconstitution, if not intended for use within a month, aliquot and store at -80°C (Avoid repeated freezing and thawing). Lyophilized proteins are shipped at ambient temperature.

Expiry Date: 12 months

Human NEFL(89-400), His tagged protein ELISA
0.1 µg of Human NEFL(89-400), His tagged protein per well



ELISA

Image 1. ELISA plate pre-coated by 1 µg/mL (100 µL/well) Human NEFL (89-400) Protein, His Tag (ABIN7092803, ABIN7272128 and ABIN7272129) can bind Anti-NEFL(89-400) antibody(DM199), Rabbit mAb ABIN7455262, ABIN7490482 and ABIN7490483 in a linear range of 0.128-80 ng/mL.

SDS-PAGE

Image 2. Human NEFL(89-400) Protein, His Tag on SDS-PAGE under reducing condition.