

Datasheet for ABIN7092809

NEFL Protein (AA 9-88) (Fc Tag)[Go to Product page](#)**2** Images

Overview

Quantity:	100 µg
Target:	NEFL
Protein Characteristics:	AA 9-88
Origin:	Human
Source:	HEK-293 Cells
Protein Type:	Recombinant
Purification tag / Conjugate:	This NEFL protein is labelled with Fc Tag.

Product Details

Purpose:	Recombinant Human NEFL(9-88) with C-terminal human Fc tag
Specificity:	NEFL (Thr9-Thr88) hFc (Glu99-Ala330)
Characteristics:	Extracellular Domain Protein
Purification:	Purified from cell culture supernatant by affinity chromatography
Purity:	The purity of the protein is greater than 95 % as determined by SDS-PAGE and Coomassie blue staining.

Target Details

Target:	NEFL
Alternative Name:	NEFL (NEFL Products)
Background:	Neurofilaments are type IV intermediate filament heteropolymers composed of light, medium,

Target Details

and heavy chains. Neurofilaments comprise the axoskeleton and they functionally maintain the neuronal caliber. They may also play a role in intracellular transport to axons and dendrites. This gene encodes the light chain neurofilament protein. Mutations in this gene cause Charcot-Marie-Tooth disease types 1F (CMT1F) and 2E (CMT2E), disorders of the peripheral nervous system that are characterized by distinct neuropathies. A pseudogene has been identified on chromosome Y. [provided by RefSeq, Oct 2008]

Molecular Weight: predicted molecular mass of 34.9 kDa after removal of the signal peptide. The apparent molecular mass of NEFL(9-88)-hFc is 35-55 kDa due to glycosylation.

UniProt: [P07196](#)

Application Details

Restrictions: For Research Use only

Handling

Format: Lyophilized

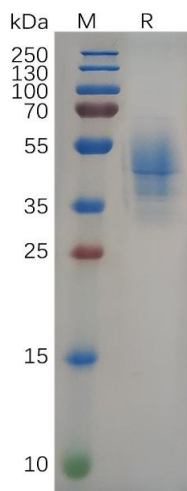
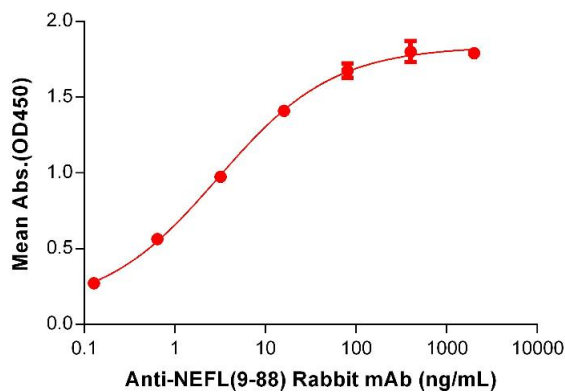
Buffer: Lyophilized from sterile PBS, pH 7.4. Normally 5 % - 8 % trehalose is added as protectants before lyophilization.

Storage: -20 °C,-80 °C

Storage Comment: Store at -20°C to -80°C for 12 months in lyophilized form. After reconstitution, if not intended for use within a month, aliquot and store at -80°C (Avoid repeated freezing and thawing). Lyophilized proteins are shipped at ambient temperature.

Expiry Date: 12 months

Human NEFL(9-88), hFc tagged protein ELISA
0.1 µg of Human NEFL(9-88), hFc tagged protein per well



ELISA

Image 1. ELISA plate pre-coated by 1 µg/mL (100 µL/well) Human NEFL (9-88) Protein, hFc Tag (ABIN7092809, ABIN7272428 and ABIN7272429) can bind Anti-NEFL(9-88) antibody(DM198), Rabbit mAb ABIN7455261, ABIN7490480 and ABIN7490481 in a linear range of 0.128-80 ng/mL.

SDS-PAGE

Image 2. Human NEFL(9-88) Protein, hFc Tag on SDS-PAGE under reducing condition.