

Datasheet for ABIN7092813

**CCR6 Protein (AA 1-47) (Fc Tag)**[Go to Product page](#)**1** Image

## Overview

|                               |  |
|-------------------------------|--|
| Quantity:                     | 100 µg                                     |
| Target:                       | CCR6                                       |
| Protein Characteristics:      | AA 1-47                                    |
| Origin:                       | Human                                      |
| Source:                       | HEK-293 Cells                              |
| Protein Type:                 | Recombinant                                |
| Purification tag / Conjugate: | This CCR6 protein is labelled with Fc Tag. |

## Product Details

|                  |   |
|------------------|---|
| Purpose:         | Recombinant Human CCR6 with C-terminal human Fc tag   |
| Specificity:     | CCR6 (Met1-Leu47) hFc (Glu99-Ala330)  |
| Characteristics: | Extracellular Domain Protein  |
| Purification:    | Purified from cell culture supernatant by affinity chromatography                                     |
| Purity:          | The purity of the protein is greater than 95 % as determined by SDS-PAGE and Coomassie blue staining. |

## Target Details

|                   |  |
|-------------------|--|
| Target:           | CCR6   |
| Alternative Name: | CCR6 ( <a href="#">CCR6 Products</a> )   |
| Background:       | This gene encodes a member of the beta chemokine receptor family, which is predicted to be a |

## Target Details

seven transmembrane protein similar to G protein-coupled receptors. The gene is preferentially expressed by immature dendritic cells and memory T cells. The ligand of this receptor is macrophage inflammatory protein 3 alpha (MIP-3 alpha). This receptor has been shown to be important for B-lineage maturation and antigen-driven B-cell differentiation, and it may regulate the migration and recruitment of dendritic and T cells during inflammatory and immunological responses. Alternatively spliced transcript variants that encode the same protein have been described for this gene. [provided by RefSeq, Jul 2008]

Molecular Weight: predicted molecular mass of 31.6 kDa after removal of the signal peptide. The apparent molecular mass of CCR6-hFc is 35-55 kDa due to glycosylation.

UniProt: [P51684](#)

Pathways: [cAMP Metabolic Process](#)

## Application Details

Restrictions: For Research Use only

## Handling

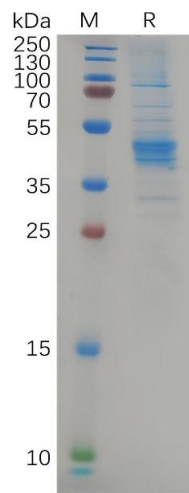
Format: Lyophilized

Buffer: Lyophilized from sterile PBS, pH 7.4. Normally 5 % - 8 % trehalose is added as protectants before lyophilization.

Storage: -20 °C, -80 °C

Storage Comment: Store at -20°C to -80°C for 12 months in lyophilized form. After reconstitution, if not intended for use within a month, aliquot and store at -80°C (Avoid repeated freezing and thawing).  
Lyophilized proteins are shipped at ambient temperature.

Expiry Date: 12 months



SDS-PAGE

**Image 1.** Human Protein, hFc Tag on SDS-PAGE under reducing condition.