

Datasheet for ABIN7092826
E-cadherin Protein (AA 23-706) (Fc Tag)



[Go to Product page](#)

2 Images

Overview

Quantity:	100 µg
Target:	E-cadherin (CDH1)
Protein Characteristics:	AA 23-706
Origin:	Human
Source:	HEK-293 Cells
Protein Type:	Recombinant
Purification tag / Conjugate:	This E-cadherin protein is labelled with Fc Tag.

Product Details

Purpose:	Recombinant Human CDH1 with C-terminal human Fc tag
Specificity:	CDH1 (Glu23-Gln706) hFc (Glu99-Ala330)
Characteristics:	Extracellular Domain Protein
Purification:	Purified from cell culture supernatant by affinity chromatography
Purity:	The purity of the protein is greater than 95 % as determined by SDS-PAGE and Coomassie blue staining.

Target Details

Target:	E-cadherin (CDH1)
Alternative Name:	CDH1 (CDH1 Products)
Background:	This gene encodes a classical cadherin of the cadherin superfamily. Alternative splicing results

Target Details

in multiple transcript variants, at least one of which encodes a preproprotein that is proteolytically processed to generate the mature glycoprotein. This calcium-dependent cell-cell adhesion protein is comprised of five extracellular cadherin repeats, a transmembrane region and a highly conserved cytoplasmic tail. Mutations in this gene are correlated with gastric, breast, colorectal, thyroid and ovarian cancer. Loss of function of this gene is thought to contribute to cancer progression by increasing proliferation, invasion, and/or metastasis. The ectodomain of this protein mediates bacterial adhesion to mammalian cells and the cytoplasmic domain is required for internalization. This gene is present in a gene cluster with other members of the cadherin family on chromosome 16. [provided by RefSeq, Nov 2015]

Molecular Weight: predicted molecular mass of 101.6 kDa after removal of the signal peptide. The apparent molecular mass of CDH1-hFc is 100-130 kDa due to glycosylation.

UniProt: [P12830](#)

Pathways: [WNT Signaling](#), [Sensory Perception of Sound](#), [Cell-Cell Junction Organization](#), [Tube Formation](#)

Application Details

Restrictions: For Research Use only

Handling

Format: Lyophilized

Buffer: Lyophilized from sterile PBS, pH 7.4. Normally 5 % - 8 % trehalose is added as protectants before lyophilization.

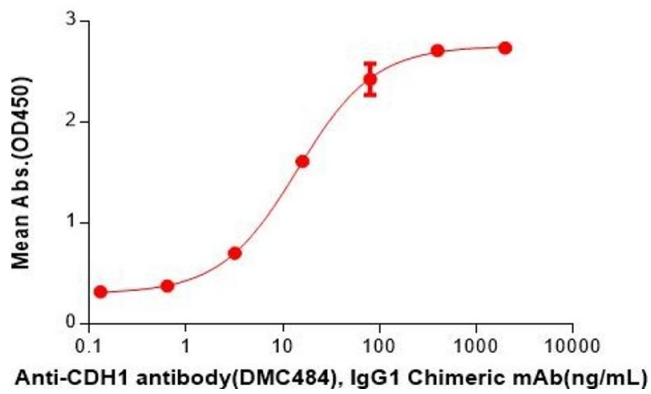
Storage: -20 °C,-80 °C

Storage Comment: Store at -20°C to -80°C for 12 months in lyophilized form. After reconstitution, if not intended for use within a month, aliquot and store at -80°C (Avoid repeated freezing and thawing).
Lyophilized proteins are shipped at ambient temperature.

Expiry Date: 12 months

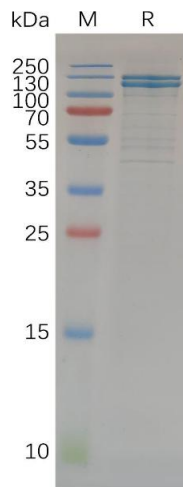
Human CDH1,hFc Tagged protein ELISA

0.2 µg of Human CDH1, hFc tagged protein per well



ELISA

Image 1. ELISA plate pre-coated by 2 µg/mL (100 µL/well) Human Protein, hFc Tag (ABIN7092826, ABIN7272452 and ABIN7272453) can bind Anti- antibody, IgG1 Chimeric mAb in a linear range of 0.64-16 ng/mL.



SDS-PAGE

Image 2. Human Protein, hFc Tag on SDS-PAGE under reducing condition.