

Datasheet for ABIN7092833  
**IGFBP7 Protein (AA 30-282) (His tag)**



[Go to Product page](#)

**3** Images

## Overview

Quantity:	100 µg
Target:	IGFBP7
Protein Characteristics:	AA 30-282
Origin:	Human
Source:	HEK-293 Cells
Protein Type:	Recombinant
Purification tag / Conjugate:	This IGFBP7 protein is labelled with His tag.

## Product Details

Purpose:	Recombinant human IGFBP7 protein with N-terminal 6xHis tag
Specificity:	6xHis tag IGFBP7 (Asp30-Leu282)
Characteristics:	Extracellular Domain Protein
Purification:	Purified from cell culture supernatant by affinity chromatography
Purity:	The purity of the protein is greater than 85 % as determined by SDS-PAGE and Coomassie blue staining.

## Target Details

Target:	IGFBP7
Alternative Name:	IGFBP7 ( <a href="#">IGFBP7 Products</a> )
Background:	This gene encodes a member of the insulin-like growth factor (IGF)-binding protein (IGFBP)

## Target Details

---

family. IGFBPs bind IGFs with high affinity, and regulate IGF availability in body fluids and tissues and modulate IGF binding to its receptors. This protein binds IGF-I and IGF-II with relatively low affinity, and belongs to a subfamily of low-affinity IGFBPs. It also stimulates prostacyclin production and cell adhesion. Alternatively spliced transcript variants encoding different isoforms have been described for this gene, and one variant has been associated with retinal arterial macroaneurysm (PMID:21835307). [provided by RefSeq, Dec 2011]

Molecular Weight: predicted molecular mass of 27.0 kDa after removal of the signal peptide. The apparent molecular mass of His-IGFBP7 is 35-40 kDa due to glycosylation.

UniProt: [Q16270](#)

Pathways: [Growth Factor Binding](#)

## Application Details

---

Restrictions: For Research Use only

## Handling

---

Format: Lyophilized

Buffer: Lyophilized from sterile PBS, pH 7.4. Normally 5 % - 8 % trehalose is added as protectants before lyophilization.

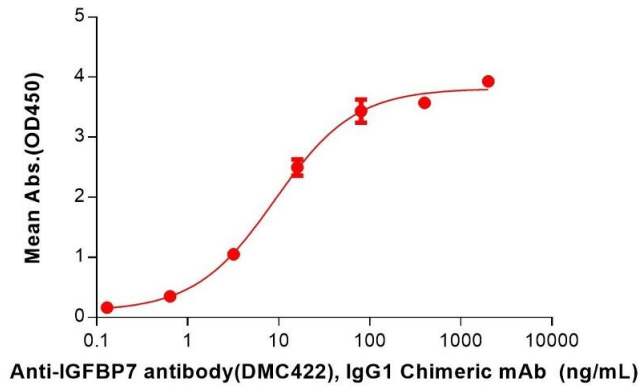
Storage: -20 °C,-80 °C

Storage Comment: Store at -20°C to -80°C for 12 months in lyophilized form. After reconstitution, if not intended for use within a month, aliquot and store at -80°C (Avoid repeated freezing and thawing).  
Lyophilized proteins are shipped at ambient temperature.

Expiry Date: 12 months

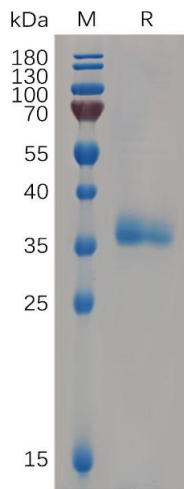
### Human IGFBP7, His Tagged protein ELISA

0.2 µg of Human IGFBP7, His tagged protein per well



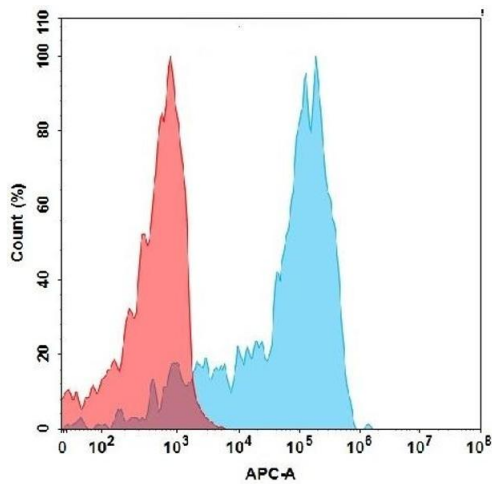
### ELISA

**Image 1.** ELISA plate pre-coated by 2 µg/mL (100 µL/well) Human IG Protein, His Tag (ABIN7092833, ABIN7272498 and ABIN7272499) can bind Anti-IG antibody, IgG1 Chimeric mAb in a linear range of 3.20-80 ng/mL.



### SDS-PAGE

**Image 2.** Human IG Protein, His Tag on SDS-PAGE under reducing condition.



### Flow Cytometry

**Image 3.** Flow cytometry analysis with 15 µg/mL Human IG Protein, His Tag (ABIN7092833, ABIN7272498 and ABIN7272499) on Expi293 cells transfected with Human CD93 protein (Blue histogram) or Expi293 transfected with irrelevant protein (Red histogram).