

Datasheet for ABIN7092875

anti-TACSTD2 antibody (AA 27-274)[Go to Product page](#)**3** Images

Overview

Quantity:	100 µg
Target:	TACSTD2
Binding Specificity:	AA 27-274
Reactivity:	Human
Host:	Rabbit
Clonality:	Monoclonal
Conjugate:	This TACSTD2 antibody is un-conjugated
Application:	ELISA, Flow Cytometry (FACS)

Product Details

Immunogen:	Recombinant human Trop2 (His27-Thr274) (ABIN6961178) produced by using human HEK293 cells
Clone:	DM74
Isotype:	IgG
Purification:	Purified from cell culture supernatant by affinity chromatography

Target Details

Target:	TACSTD2
Alternative Name:	Trop2 (TACSTD2 Products)
Background:	Synonyms: TACSTD2, GA733-1, M1S1, TROP2

Target Details

Description: This intronless gene encodes a carcinoma-associated antigen. This antigen is a cell surface receptor that transduces calcium signals. Mutations of this gene have been associated with gelatinous drop-like corneal dystrophy.

Molecular Weight: 35.7kDa

Gene ID: 4070

UniProt: [P09758](#)

Application Details

Application Notes: ELISA 1/5000-10000, Flow Cyt 1/100

Restrictions: For Research Use only

Handling

Format: Lyophilized

Reconstitution: Reconstitute with deionized water

Buffer: Lyophilized from sterile PBS, pH 7.4. Normally 5 % - 8 % trehalose is added as protectants before lyophilization., 0.1 % Procline 300

Preservative: ProClin

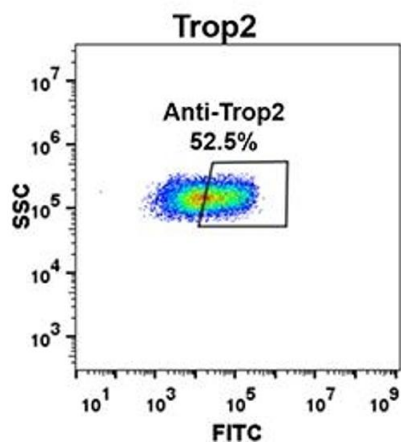
Precaution of Use: This product contains ProClin: a POISONOUS AND HAZARDOUS SUBSTANCE which should be handled by trained staff only.

Storage: -20 °C, -80 °C

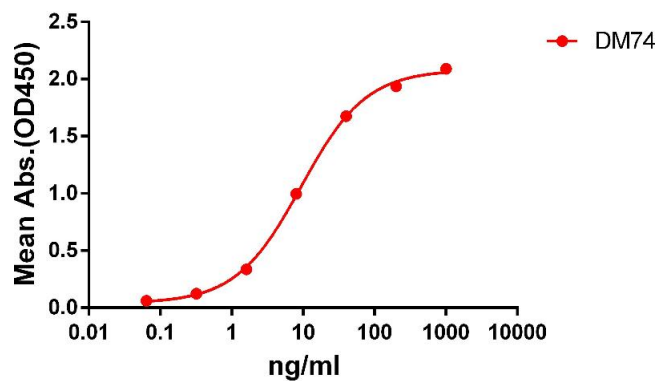
Storage Comment: Store at -20°C to -80°C for 12 months in lyophilized form. After reconstitution, if not intended for use within a month, aliquot and store at -80°C (Avoid repeated freezing and thawing).
Lyophilized proteins are shipped at ambient temperature.

Expiry Date: 12 months

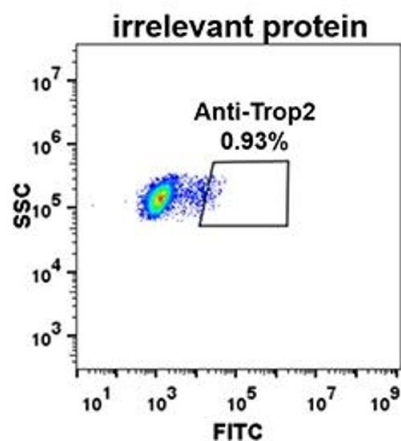
B



Trop2



A



Flow Cytometry

Image 1.

ELISA

Image 2. ELISA plate pre-coated by 2 µg/mL (100 µL/well) Human Trop2 protein, mFc-His tagged protein ((ABIN6961178, ABIN7042385 and ABIN7042386)) can bind Rabbit anti-Trop2 monoclonal antibody(clone: DM74) in a linear range of 1-100 ng/mL.

Flow Cytometry

Image 3. Expi 293 cell line transfected with irrelevant protein (A) and human Trop2 (B) were surface stained with Rabbit anti-Trop2 monoclonal antibody 1 µg/mL (clone: DM74) followed by Alexa 488-conjugated anti-rabbit IgG secondary antibody.