

Datasheet for ABIN7092882
anti-TIM3 antibody (AA 22-202)

3 Images

[Go to Product page](#)

Overview

Quantity:	100 µg
Target:	TIM3 (TIM 3)
Binding Specificity:	AA 22-202
Reactivity:	Human
Host:	Rabbit
Clonality:	Monoclonal
Conjugate:	This TIM3 antibody is un-conjugated
Application:	Flow Cytometry (FACS), ELISA

Product Details

Immunogen:	Recombinant human TIM3 (Ser22-Gly202) (ABIN6961103) produced by using human HEK293 cells
Clone:	DM81
Isotype:	IgG
Purification:	Purified from cell culture supernatant by affinity chromatography

Target Details

Target:	TIM3 (TIM 3)
Alternative Name:	TIM3 (TIM 3 Products)
Target Type:	Virus

Target Details

Background:	Synonyms:HAVCR2, TIM3, TIMD3, FLJ14428, KIM3 Description:The protein encoded by this gene belongs to the immunoglobulin superfamily, and TIM family of proteins. CD4-positive T helper lymphocytes can be divided into types 1 (Th1) and 2 (Th2) on the basis of their cytokine secretion patterns. Th1 cells are involved in cell-mediated immunity to intracellular pathogens and delayed-type hypersensitivity reactions, whereas, Th2 cells are involved in the control of extracellular helminthic infections and the promotion of atopic and allergic diseases. This protein is a Th1-specific cell surface protein that regulates macrophage activation, and inhibits Th1-mediated auto- and alloimmune responses, and promotes immunological tolerance.
Molecular Weight:	33.4kDa
Gene ID:	84868
UniProt:	Q8TDQ0
Pathways:	Regulation of Lipid Metabolism by PPARalpha , Cancer Immune Checkpoints

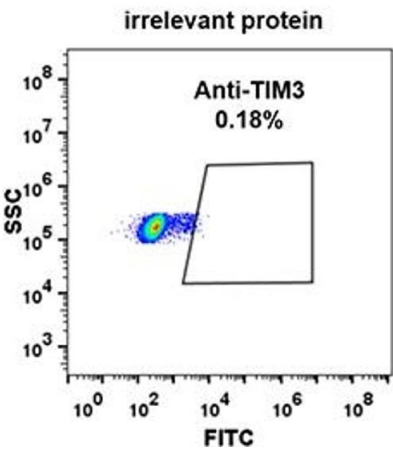
Application Details

Application Notes:	ELISA 1/5000-10000,Flow Cyt 1/100
Restrictions:	For Research Use only

Handling

Format:	Lyophilized
Reconstitution:	Reconstitute with deionized water
Buffer:	Lyophilized from sterile PBS, pH 7.4. Normally 5 % - 8 % trehalose is added as protectants before lyophilization.,0.1 % Procline 300
Preservative:	ProClin
Precaution of Use:	This product contains ProClin: a POISONOUS AND HAZARDOUS SUBSTANCE which should be handled by trained staff only.
Storage:	-20 °C,-80 °C
Storage Comment:	Store at -20°C to -80°C for 12 months in lyophilized form. After reconstitution, if not intended for use within a month, aliquot and store at -80°C (Avoid repeated freezing and thawing). Lyophilized proteins are shipped at ambient temperature.
Expiry Date:	12 months

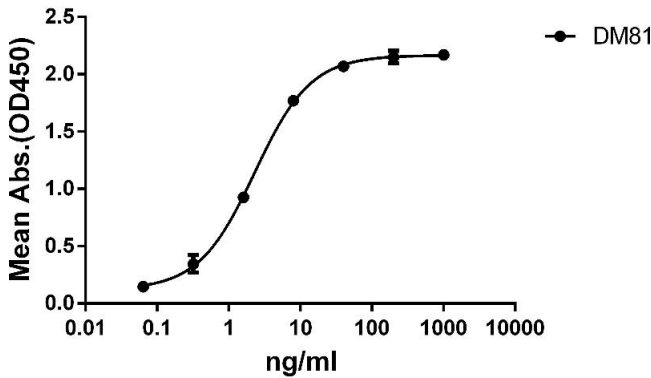
A



Flow Cytometry

Image 1. Expi 293 cell line transfected with irrelevant protein (A) and human TIM3 (B) were surface stained with Rabbit anti-TIM3 monoclonal antibody 1 µg/mL (clone: DM81) followed by Alexa 488-conjugated anti-rabbit IgG secondary antibody.

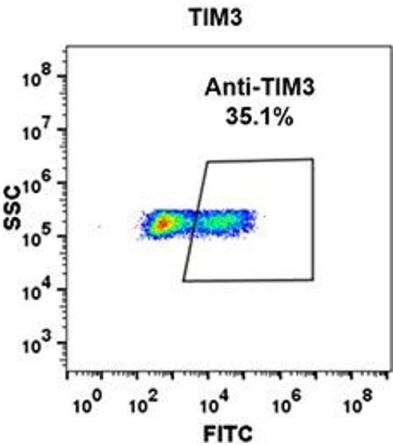
TIM3



ELISA

Image 2. ELISA plate pre-coated by 2 µg/mL (100 µL/well) Human TIM3 protein, mFc-His tagged protein ((ABIN6961103, ABIN7042235 and ABIN7042236)) can bind Rabbit anti-TIM3 monoclonal antibody(clone: DM81) in a linear range of 0.32-40 ng/mL.

B



Flow Cytometry

Image 3.