



Datasheet for ABIN7092888
anti-PSCA antibody (AA 12-86)



[Go to Product page](#)

3 Images

Overview

Quantity:	100 µg
Target:	PSCA
Binding Specificity:	AA 12-86
Reactivity:	Human
Host:	Rabbit
Clonality:	Monoclonal
Conjugate:	This PSCA antibody is un-conjugated
Application:	ELISA, Flow Cytometry (FACS)

Product Details

Immunogen:	Recombinant human PSCA (Leu12-Ser86) (ABIN6961137) produced by using human HEK293 cells
Clone:	DM87
Isotype:	IgG
Purification:	Purified from cell culture supernatant by affinity chromatography

Target Details

Target:	PSCA
Alternative Name:	PSCA (PSCA Products)
Background:	Synonyms:PSCA,UNQ206,PRO232

Target Details

Description: This gene encodes a glycosylphosphatidylinositol-anchored cell membrane glycoprotein. In addition to being highly expressed in the prostate it is also expressed in the bladder, placenta, colon, kidney, and stomach. This gene is up-regulated in a large proportion of prostate cancers and is also detected in cancers of the bladder and pancreas. This gene includes a polymorphism that results in an upstream start codon in some individuals

Molecular Weight: 11.9kDa

Gene ID: 8000

UniProt: [O43653](#)

Application Details

Application Notes: ELISA 1/5000-10000, Flow Cyt 1/100

Restrictions: For Research Use only

Handling

Format: Lyophilized

Reconstitution: Reconstitute with deionized water

Buffer: Lyophilized from sterile PBS, pH 7.4. Normally 5 % - 8 % trehalose is added as protectants before lyophilization., 0.1 % Procline 300

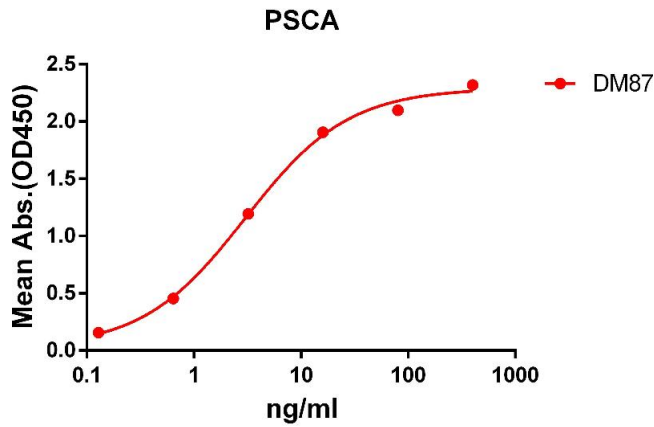
Preservative: ProClin

Precaution of Use: This product contains ProClin: a POISONOUS AND HAZARDOUS SUBSTANCE which should be handled by trained staff only.

Storage: -20 °C, -80 °C

Storage Comment: Store at -20°C to -80°C for 12 months in lyophilized form. After reconstitution, if not intended for use within a month, aliquot and store at -80°C (Avoid repeated freezing and thawing).
Lyophilized proteins are shipped at ambient temperature.

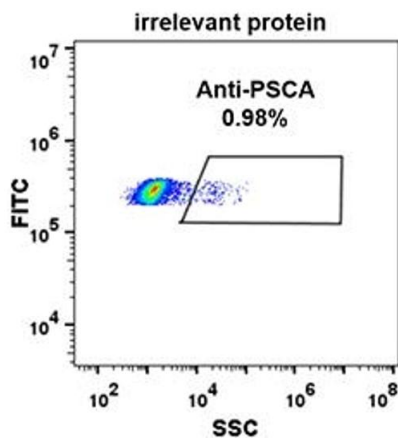
Expiry Date: 12 months



ELISA

Image 1. ELISA plate pre-coated by 2 µg/mL (100 µL/well) Human PSCA protein, hFc tagged protein ((ABIN6961137, ABIN7042303 and ABIN7042304)) can bind Rabbit anti-PSCA monoclonal antibody(clone: DM87) in a linear range of 1-100 ng/mL.

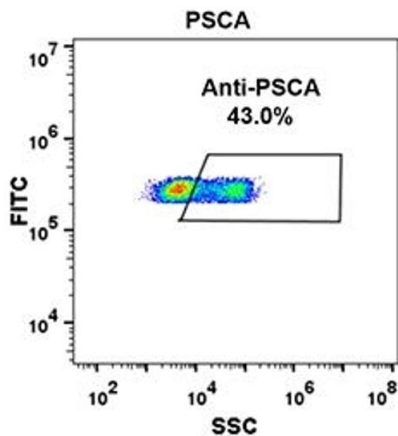
A



Flow Cytometry

Image 2. Expi 293 cell line transfected with irrelevant protein (A) and human PSCA (B) were surface stained with Rabbit anti-PSCA monoclonal antibody 1 µg/mL (clone: DM87) followed by Alexa 488-conjugated anti-rabbit IgG secondary antibody.

B



Flow Cytometry

Image 3.