

Datasheet for ABIN7092889  
**anti-NCR3 antibody (AA 19-135)**

## 3 Images

[Go to Product page](#)

## Overview

Quantity:	100 µg
Target:	NCR3
Binding Specificity:	AA 19-135
Reactivity:	Human
Host:	Rabbit
Clonality:	Monoclonal
Conjugate:	This NCR3 antibody is un-conjugated
Application:	ELISA, Flow Cytometry (FACS)

## Product Details

Immunogen:	Recombinant human NKp30 (Leu19-Glu135) (ABIN6961135) produced by using human HEK293 cells
Clone:	DM88
Isotype:	IgG
Purification:	Purified from cell culture supernatant by affinity chromatography

## Target Details

Target:	NCR3
Alternative Name:	NKp30 ( <a href="#">NCR3 Products</a> )
Background:	Synonyms: NCR3, CD337, NKp30, 1C7, LY117, MALS

## Target Details

Description: The protein encoded by this gene is a natural cytotoxicity receptor (NCR) that may aid NK cells in the lysis of tumor cells. The encoded protein interacts with CD3-zeta (CD247), a T-cell receptor. A single nucleotide polymorphism in the 5' untranslated region of this gene has been associated with mild malaria susceptibility. Three transcript variants encoding different isoforms have been found for this gene.

Molecular Weight: 21.6kDa

Gene ID: 259197

UniProt: [O14931](#)

Pathways: [Regulation of Leukocyte Mediated Immunity](#), [Positive Regulation of Immune Effector Process](#)

## Application Details

Application Notes: ELISA 1/5000-10000, Flow Cyt 1/100

Restrictions: For Research Use only

## Handling

Format: Lyophilized

Reconstitution: Reconstitute with deionized water

Buffer: Lyophilized from sterile PBS, pH 7.4. Normally 5 % - 8 % trehalose is added as protectants before lyophilization., 0.1 % Procline 300

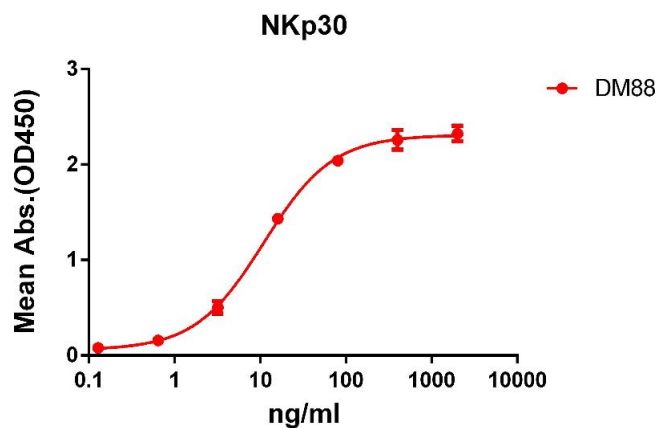
Preservative: ProClin

Precaution of Use: This product contains ProClin: a POISONOUS AND HAZARDOUS SUBSTANCE which should be handled by trained staff only.

Storage: -20 °C, -80 °C

Storage Comment: Store at -20°C to -80°C for 12 months in lyophilized form. After reconstitution, if not intended for use within a month, aliquot and store at -80°C (Avoid repeated freezing and thawing).  
Lyophilized proteins are shipped at ambient temperature.

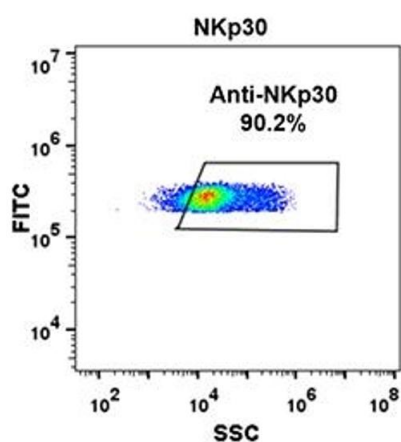
Expiry Date: 12 months



#### ELISA

**Image 1.** ELISA plate pre-coated by 2 µg/mL (100 µL/well) Human NKp30 protein, hFc tagged protein ((ABIN6961135, ABIN7042299 and ABIN7042300)) can bind Rabbit anti-NKp30 monoclonal antibody(clone: DM88) in a linear range of 1-100 ng/mL.

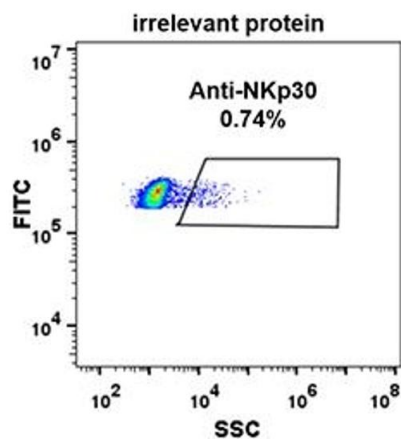
**B**



#### Flow Cytometry

**Image 2.**

**A**



#### Flow Cytometry

**Image 3.** Expi 293 cell line transfected with irrelevant protein (A) and human NKp30 (B) were surface stained with Rabbit anti-NKp30 monoclonal antibody 15 µg/mL (clone: DM88) followed by Alexa 488-conjugated anti-rabbit IgG secondary antibody.