

Datasheet for ABIN7092890  
**anti-GPRC5D antibody (AA 1-27)**

## 3 Images

[Go to Product page](#)

## Overview

|                      |                                       |
|----------------------|---------------------------------------|
| Quantity:            | 100 µg                                |
| Target:              | GPRC5D                                |
| Binding Specificity: | AA 1-27                               |
| Reactivity:          | Human                                 |
| Host:                | Rabbit                                |
| Clonality:           | Monoclonal                            |
| Conjugate:           | This GPRC5D antibody is un-conjugated |
| Application:         | ELISA, Flow Cytometry (FACS)          |

## Product Details

|               |   |
|---------------|---|
| Immunogen:    | Recombinant human GPRC5D(Met1-Glu27) (ABIN6961124) produced by using human HEK293 cells |
| Clone:        | DM89  |
| Isotype:      | IgG   |
| Purification: | Purified from cell culture supernatant by affinity chromatography                       |

## Target Details

|                   |  |
|-------------------|--|
| Target:           | GPRC5D                                     |
| Alternative Name: | GPRC5D ( <a href="#">GPRC5D Products</a> ) |
| Background:       | Synonyms:GPRC5D                            |

## Target Details

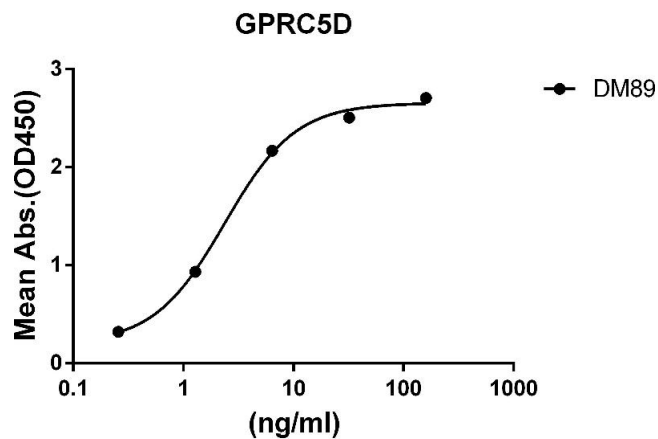
|                   |  |
|-------------------|--|
|                   | Description: The protein encoded by this gene is a member of the G protein-coupled receptor family |
| Molecular Weight: | 38.8kDa  |
| Gene ID:          | 55507  |
| UniProt:          | <a href="#">Q9NZD1</a>   |

## Application Details

|                    |                                    |
|--------------------|------------------------------------|
| Application Notes: | ELISA 1/5000-10000, Flow Cyt 1/100 |
| Restrictions:      | For Research Use only              |

## Handling

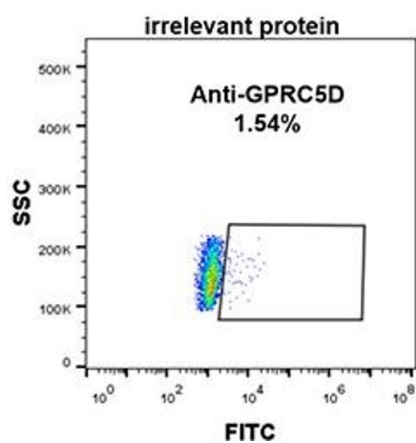
|                    |  |
|--------------------|--|
| Format:            | Lyophilized  |
| Reconstitution:    | Reconstitute with deionized water  |
| Buffer:            | Lyophilized from sterile PBS, pH 7.4. Normally 5 % - 8 % trehalose is added as protectants before lyophilization., 0.1 % Procline 300  |
| Preservative:      | ProClin  |
| Precaution of Use: | This product contains ProClin: a POISONOUS AND HAZARDOUS SUBSTANCE which should be handled by trained staff only.  |
| Storage:           | -20 °C, -80 °C   |
| Storage Comment:   | Store at -20°C to -80°C for 12 months in lyophilized form. After reconstitution, if not intended for use within a month, aliquot and store at -80°C (Avoid repeated freezing and thawing).<br>Lyophilized proteins are shipped at ambient temperature. |
| Expiry Date:       | 12 months  |



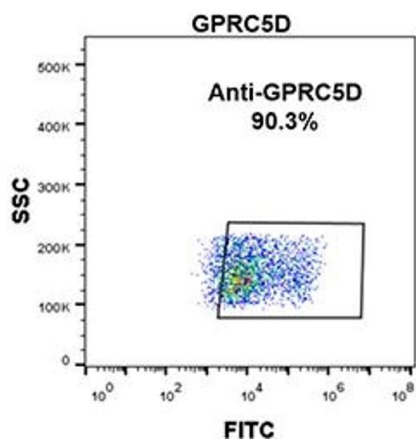
#### ELISA

**Image 1.** ELISA plate pre-coated by 2 µg/mL (100 µL/well) Human GPRC5D protein, hFc-His tagged protein ((ABIN6961124, ABIN7042277 and ABIN7042278)) can bind Rabbit anti-GPRC5D monoclonal antibody(clone: DM89) in a linear range of 0.256-32 ng/mL.

**A**



**B**



#### Flow Cytometry

**Image 2.** Expi 293 cell line transfected with irrelevant protein (A) and human GPRC5D (B) were surface stained with Rabbit anti-GPRC5D monoclonal antibody 1 µg/mL (clone: DM89) followed by Alexa 488-conjugated anti-rabbit IgG secondary antibody.

#### Flow Cytometry

**Image 3.**