

Datasheet for ABIN7092892
anti-GPRC5D antibody (AA 2-21)[Go to Product page](#)

3 Images

Overview

Quantity:	100 µg
Target:	GPRC5D
Binding Specificity:	AA 2-21
Reactivity:	Human
Host:	Rabbit
Clonality:	Monoclonal
Conjugate:	This GPRC5D antibody is un-conjugated
Application:	ELISA, Flow Cytometry (FACS)

Product Details

Immunogen:	Recombinant human GPRC5D (Thr2-Pro21) (ABIN6961124) produced by using human HEK293 cells
Clone:	DM91
Isotype:	IgG
Purification:	Purified from cell culture supernatant by affinity chromatography

Target Details

Target:	GPRC5D
Alternative Name:	GPRC5D (GPRC5D Products)
Background:	Synonyms:GPRC5D

Target Details

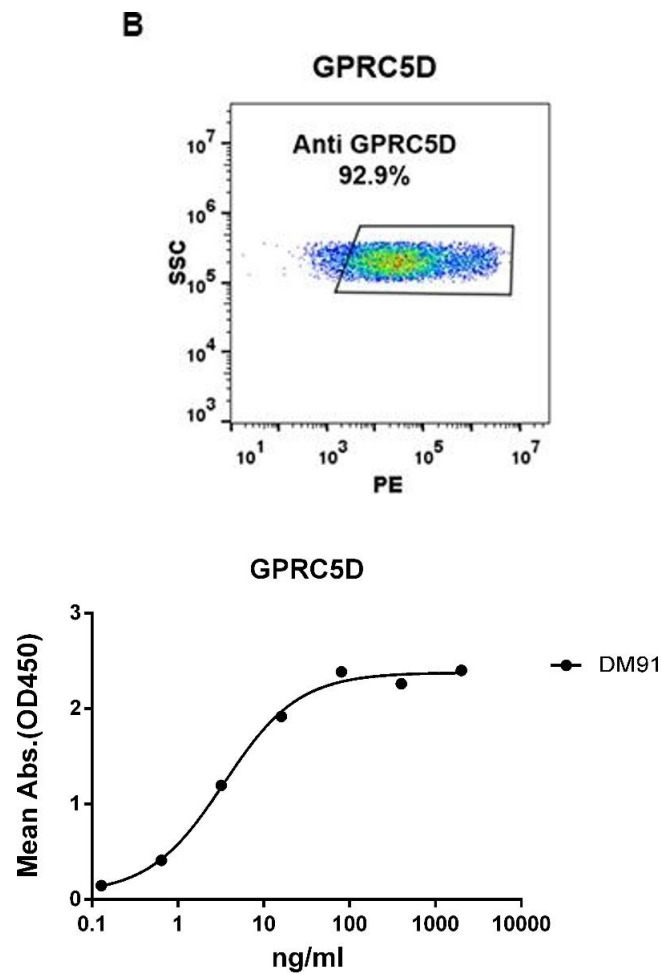
	Description: The protein encoded by this gene is a member of the G protein-coupled receptor family
Molecular Weight:	38.8kDa
Gene ID:	55507
UniProt:	Q9NZD1

Application Details

Application Notes:	ELISA 1/5000-10000, Flow Cyt 1/100
Restrictions:	For Research Use only

Handling

Format:	Lyophilized
Reconstitution:	Reconstitute with deionized water
Buffer:	Lyophilized from sterile PBS, pH 7.4. Normally 5 % - 8 % trehalose is added as protectants before lyophilization., 0.1 % Procline 300
Preservative:	ProClin
Precaution of Use:	This product contains ProClin: a POISONOUS AND HAZARDOUS SUBSTANCE which should be handled by trained staff only.
Storage:	-20 °C, -80 °C
Storage Comment:	Store at -20°C to -80°C for 12 months in lyophilized form. After reconstitution, if not intended for use within a month, aliquot and store at -80°C (Avoid repeated freezing and thawing). Lyophilized proteins are shipped at ambient temperature.
Expiry Date:	12 months

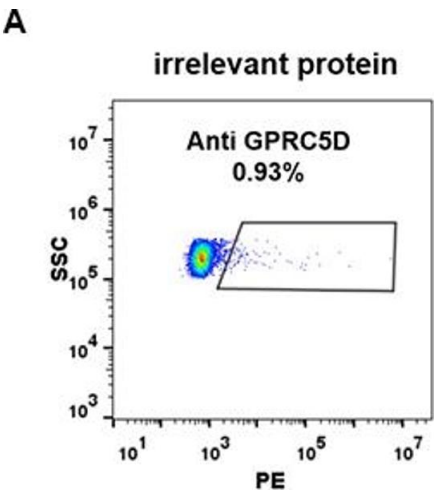


Flow Cytometry

Image 1.

ELISA

Image 2. ELISA plate pre-coated by 2 µg/mL (100 µL/well) Human GPRC5D protein, hFc-His tagged protein ((ABIN6961124, ABIN7042277 and ABIN7042278)) can bind Rabbit anti-GPRC5D monoclonal antibody(clone: DM91) in a linear range of 0.256-32 ng/mL.



Flow Cytometry

Image 3. Expi 293 cell line transfected with irrelevant protein (A) and human GPRC5D (B) were surface stained with Rabbit anti-GPRC5D monoclonal antibody 1 µg/mL (clone: DM91) followed by PE-conjugated anti-rabbit IgG secondary antibody.